

Product datasheet for **TA336033**

LAP2 (TMPO) Rabbit Polyclonal Antibody

Product data:

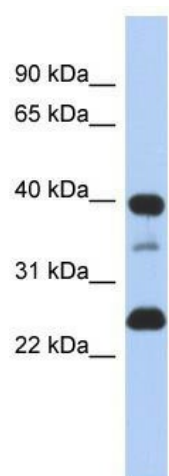
Product Type:	Primary Antibodies
Applications:	WB
Recommended Dilution:	WB
Reactivity:	Human
Host:	Rabbit
Isotype:	IgG
Clonality:	Polyclonal
Immunogen:	The immunogen for Anti-TMPO Antibody: synthetic peptide directed towards the N terminal of human TMPO. Synthetic peptide located within the following region: MPEFLEDPSVLTKDKLKSELVANNVTLPAGEQRKDVYVQLYLQHLTARNR
Formulation:	Liquid. Purified antibody supplied in 1x PBS buffer with 0.09% (w/v) sodium azide and 2% sucrose. <i>Note that this product is shipped as lyophilized powder to China customers.</i>
Purification:	Affinity Purified
Conjugation:	Unconjugated
Storage:	Store at -20°C as received.
Stability:	Stable for 12 months from date of receipt.
Predicted Protein Size:	39 kDa
Gene Name:	thymopoietin
Database Link:	NP_001027455 Entrez Gene 7112 Human P42166
Background:	TMPO may be involved in the structural organization of the nucleus and in the post-mitotic nuclear assembly. It plays an important role, together with LMNA, in the nuclear anchorage of RB1.
Synonyms:	CMD1T; LAP2; LEMD4; PRO0868; TP
Note:	Immunogen Sequence Homology: Rat: 100%; Human: 100%; Mouse: 100%; Rabbit: 100%; Zebrafish: 100%; Dog: 93%; Pig: 93%; Horse: 93%; Bovine: 93%; Guinea pig: 86%



[View online »](#)

Protein Families: Stem cell - Pluripotency, Transmembrane

Product images:



WB Suggested Anti-TMPO Antibody Titration: 0.2-1 ug/ml; ELISA Titer: 1: 62500; Positive Control: SH-SY5Y cell lysate; TMPO is strongly supported by BioGPS gene expression data to be expressed in Human SHSY5Y cells