

Product datasheet for **TA336032**

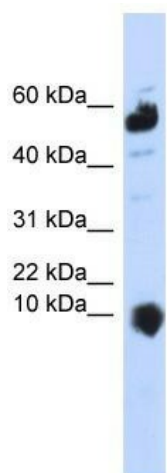
C1ORF151 (MINOS1) Rabbit Polyclonal Antibody

Product data:

Product Type:	Primary Antibodies
Applications:	WB
Recommended Dilution:	WB
Reactivity:	Human
Host:	Rabbit
Isotype:	IgG
Clonality:	Polyclonal
Immunogen:	The immunogen for Anti-C1orf151 Antibody: synthetic peptide directed towards the middle region of human C1orf151. Synthetic peptide located within the following region: IVFSLTFFKRRMWPLAFGSGMGLGMAYSNCQHDFQAPYLLHGKYVKEQEQ
Formulation:	Liquid. Purified antibody supplied in 1x PBS buffer with 0.09% (w/v) sodium azide and 2% sucrose. <i>Note that this product is shipped as lyophilized powder to China customers.</i>
Purification:	Affinity Purified
Conjugation:	Unconjugated
Storage:	Store at -20°C as received.
Stability:	Stable for 12 months from date of receipt.
Predicted Protein Size:	9 kDa
Gene Name:	mitochondrial inner membrane organizing system 1
Database Link:	NP_001027535 Entrez Gene 440574 Human Q5TGZ0
Background:	The exact function of C1orf151 remains unknown.
Synonyms:	C1orf151; Mic10; MIO10
Note:	Immunogen Sequence Homology: Dog: 100%; Pig: 100%; Rat: 100%; Human: 100%; Mouse: 100%; Rabbit: 100%; Guinea pig: 100%; Horse: 93%
Protein Families:	Transmembrane



[View online »](#)

Product images:

WB Suggested Anti-C1orf151 Antibody Titration:
0.2-1 ug/ml; ELISA Titer: 1: 312500; Positive
Control: 293T cell lysate