

Product datasheet for **TA336031**

SPINT1 Rabbit Polyclonal Antibody

Product data:

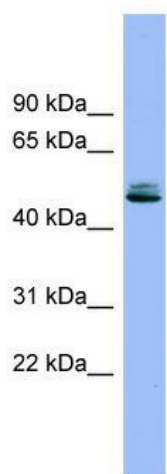
Product Type:	Primary Antibodies
Applications:	WB
Recommended Dilution:	WB
Reactivity:	Human
Host:	Rabbit
Isotype:	IgG
Clonality:	Polyclonal
Immunogen:	The immunogen for Anti-SPINT1 Antibody: synthetic peptide directed towards the middle region of human SPINT1. Synthetic peptide located within the following region: PFSEHCARFTYGGCYGNKNNFEEEQQCLESCRGISKKDFGLRREIPIPS
Formulation:	Liquid. Purified antibody supplied in 1x PBS buffer with 0.09% (w/v) sodium azide and 2% sucrose. <i>Note that this product is shipped as lyophilized powder to China customers.</i>
Purification:	Affinity Purified
Conjugation:	Unconjugated
Storage:	Store at -20°C as received.
Stability:	Stable for 12 months from date of receipt.
Predicted Protein Size:	53 kDa
Gene Name:	serine peptidase inhibitor, Kunitz type 1
Database Link:	NP_001027539 Entrez Gene 6692 Human O43278
Background:	The protein encoded by this gene is a member of the Kunitz family of serine protease inhibitors. The protein is a potent inhibitor specific for HGF activator and is thought to be involved in the regulation of the proteolytic activation of HGF in injured t
Synonyms:	HAI; HAI1; MANSC2
Note:	Immunogen Sequence Homology: Dog: 100%; Pig: 100%; Rat: 100%; Horse: 100%; Human: 100%; Mouse: 100%; Bovine: 100%; Rabbit: 100%; Guinea pig: 100%



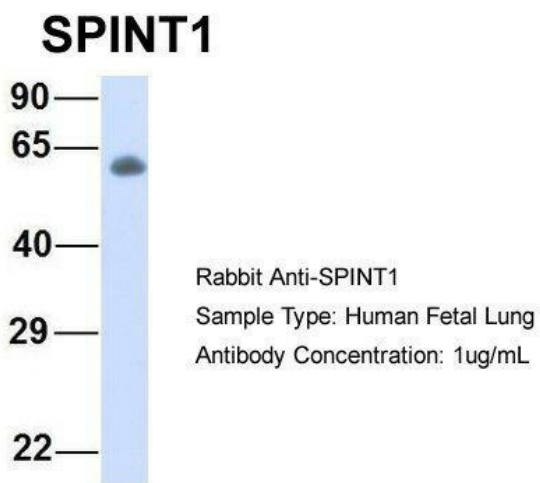
[View online »](#)

Protein Families: Druggable Genome, Secreted Protein, Transmembrane

Product images:



WB Suggested Anti-SPINT1 Antibody Titration:
0.2-1 ug/ml; Positive Control: PANC1 cell lysate



Host: Rabbit; Target Name: SPINT1; Sample
Tissue: Human Fetal Lung; Antibody Dilution: 1.0
ug/ml