

## Product datasheet for **TA336028**

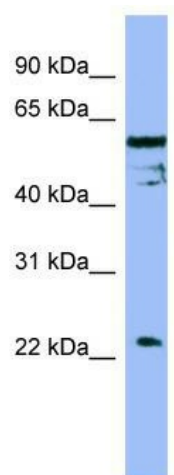
### FAIM1 (FAIM) Rabbit Polyclonal Antibody

#### Product data:

Product Type:	Primary Antibodies
Applications:	WB
Recommended Dilution:	WB
Reactivity:	Human
Host:	Rabbit
Isotype:	IgG
Clonality:	Polyclonal
Immunogen:	The immunogen for Anti-FAIM Antibody: synthetic peptide directed towards the middle region of human FAIM. Synthetic peptide located within the following region: FRIVLEKDAMDVWCNGKKLETAGEFVDDGTETHFSIGNHDCYIKAVSSGK
Formulation:	Liquid. Purified antibody supplied in 1x PBS buffer with 0.09% (w/v) sodium azide and 2% sucrose. <i>Note that this product is shipped as lyophilized powder to China customers.</i>
Purification:	Affinity Purified
Conjugation:	Unconjugated
Storage:	Store at -20°C as received.
Stability:	Stable for 12 months from date of receipt.
Predicted Protein Size:	24 kDa
Gene Name:	Fas apoptotic inhibitory molecule
Database Link:	<a href="#">NP_001028202</a> <a href="#">Entrez Gene 55179 Human</a> <a href="#">Q9NVQ4</a>
Background:	FAIM plays a role as an inducible effector molecule that mediates Fas resistance produced by surface Ig engagement in B cells.
Synonyms:	FAIM1
Note:	Immunogen Sequence Homology: Pig: 100%; Rat: 100%; Horse: 100%; Human: 100%; Mouse: 100%; Bovine: 100%; Rabbit: 100%; Guinea pig: 100%; Dog: 93%; Zebrafish: 93%



[View online »](#)

**Product images:**

WB Suggested Anti-FAIM Antibody Titration: 0.2-1 ug/ml; ELISA Titer: 1:312500; Positive Control: OVCAR-3 cell lysate. FAIM is supported by BioGPS gene expression data to be expressed in OVCAR3