

Product datasheet for **TA336025**

ENTPD8 Rabbit Polyclonal Antibody

Product data:

Product Type:	Primary Antibodies
Applications:	WB
Recommended Dilution:	WB
Reactivity:	Human
Host:	Rabbit
Isotype:	IgG
Clonality:	Polyclonal
Immunogen:	The immunogen for Anti-ENTPD8 Antibody: synthetic peptide directed towards the N terminal of human ENTPD8. Synthetic peptide located within the following region: IPEAQHRKTPTFLGATAGMRLLSRKNSSQARDIFAAVTQVLGRSPVDFWG
Formulation:	Liquid. Purified antibody supplied in 1x PBS buffer with 0.09% (w/v) sodium azide and 2% sucrose. <i>Note that this product is shipped as lyophilized powder to China customers.</i>
Purification:	Affinity Purified
Conjugation:	Unconjugated
Storage:	Store at -20°C as received.
Stability:	Stable for 12 months from date of receipt.
Predicted Protein Size:	54 kDa
Gene Name:	ectonucleoside triphosphate diphosphohydrolase 8
Database Link:	NP_001028285 Entrez Gene 377841 Human Q5MY95
Background:	ENTPD8 is the canalicular ectonucleoside NTPDase responsible for the main hepatic NTPDase activity. Ectonucleoside NTPDases catalyze the hydrolysis of gamma- and beta-phosphate residues of nucleotides, playing a central role in concentration of extracellular nucleotides. It has activity toward ATP, ADP, UTP and UDP, but not toward AMP.
Synonyms:	E-NTPDase; GLSR2492; NTPDase-8; UNQ2492



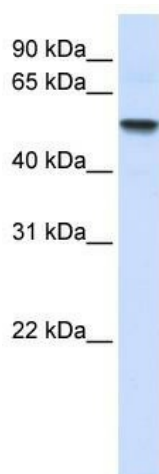
[View online »](#)

Note: Immunogen Sequence Homology: Human: 100%; Horse: 93%; Mouse: 86%; Rabbit: 86%; Rat: 79%; Bovine: 79%

Protein Families: Transmembrane

Protein Pathways: Purine metabolism, Pyrimidine metabolism

Product images:



WB Suggested Anti-ENTPD8 Antibody Titration:
0.2-1 ug/ml; ELISA Titer: 1: 312500; Positive
Control: Human Lung