

## Product datasheet for **TA336024**

### SAR1B Rabbit Polyclonal Antibody

#### Product data:

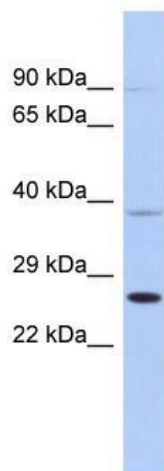
Product Type:	Primary Antibodies
Applications:	WB
Recommended Dilution:	WB
Reactivity:	Human
Host:	Rabbit
Isotype:	IgG
Clonality:	Polyclonal
Immunogen:	The immunogen for Anti-SAR1B Antibody: synthetic peptide directed towards the middle region of human SAR1B. Synthetic peptide located within the following region: RLLESKEELDSLMTDETIANVPILILGNKIDRPEAISEERLREMFGLYGQ
Formulation:	Liquid. Purified antibody supplied in 1x PBS buffer with 0.09% (w/v) sodium azide and 2% sucrose. <i>Note that this product is shipped as lyophilized powder to China customers.</i>
Purification:	Affinity Purified
Conjugation:	Unconjugated
Storage:	Store at -20°C as received.
Stability:	Stable for 12 months from date of receipt.
Predicted Protein Size:	22 kDa
Gene Name:	secretion associated Ras related GTPase 1B
Database Link:	<a href="#">NP_001028675</a> <a href="#">Entrez Gene 51128 Human</a> <a href="#">Q9Y6B6</a>
Background:	SAR1B is involved in transport from the endoplasmic reticulum to the Golgi apparatus. SAR1B is activated by the guanine nucleotide exchange factor PREB. SAR1B is involved in the selection of the protein cargo and the assembly of the COPII coat complex.
Synonyms:	ANDD; CMRD; GTBPB; SARA2



[View online »](#)

**Note:** Immunogen Sequence Homology: Dog: 100%; Pig: 100%; Rat: 100%; Horse: 100%; Human: 100%; Mouse: 100%; Bovine: 100%; Rabbit: 100%; Guinea pig: 100%; Zebrafish: 92%; Yeast: 77%

**Product images:**



WB Suggested Anti-SAR1B Antibody Titration: 0.2-1 ug/ml; ELISA Titer: 1:1562500; Positive Control: Human Liver