

## Product datasheet for **TA336023**

### Archaemetzincin 2 (AMZ2) Rabbit Polyclonal Antibody

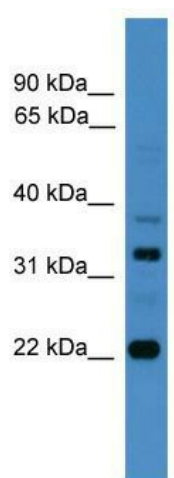
#### Product data:

Product Type:	Primary Antibodies
Applications:	WB
Recommended Dilution:	WB
Reactivity:	Human
Host:	Rabbit
Isotype:	IgG
Clonality:	Polyclonal
Immunogen:	The immunogen for Anti-AMZ2 Antibody: synthetic peptide directed towards the C terminal of human AMZ2. Synthetic peptide located within the following region: ACLMQGSNHLEEADRRPLNLCPICLHKLQCAVGF SIVERYKALVRWIDDE
Formulation:	Liquid. Purified antibody supplied in 1x PBS buffer with 0.09% (w/v) sodium azide and 2% sucrose.
Purification:	Affinity Purified
Conjugation:	Unconjugated
Storage:	Store at -20°C as received.
Stability:	Stable for 12 months from date of receipt.
Predicted Protein Size:	33 kDa
Gene Name:	archaelysin family metallopeptidase 2
Database Link:	<a href="#">NP_001028746</a> <a href="#">Entrez Gene 51321 Human</a> <a href="#">Q86W34</a>
Background:	The function of AMZ2 remains unknown.
Synonyms:	archaelysin family metallopeptidase 2; archaemetzincin-2; archaemetzincins-2
Note:	Immunogen Sequence Homology: Dog: 100%; Pig: 100%; Rat: 100%; Horse: 100%; Human: 100%; Bovine: 100%; Rabbit: 100%; Guinea pig: 100%; Mouse: 93%
Protein Families:	Druggable Genome



[View online »](#)

## Product images:



WB Suggested Anti-AMZ2 Antibody Titration: 0.2-1 ug/ml; ELISA Titer: 1:312500; Positive Control: RPMI 8226 cell lysate