

Product datasheet for **TA336022**

GALNTL6 Rabbit Polyclonal Antibody

Product data:

Product Type:	Primary Antibodies
Applications:	WB
Recommended Dilution:	WB
Reactivity:	Human
Host:	Rabbit
Isotype:	IgG
Clonality:	Polyclonal
Immunogen:	The immunogen for Anti-GALNTL6 Antibody is: synthetic peptide directed towards the N-terminal region of Human GALNTL6. Synthetic peptide located within the following region: EEDHDDSA YRENGFNIFVSN NIALERSLPDIRHANCKHKMYLERLPNTSI
Formulation:	Liquid. Purified antibody supplied in 1x PBS buffer with 0.09% (w/v) sodium azide and 2% sucrose. <i>Note that this product is shipped as lyophilized powder to China customers.</i>
Purification:	Affinity Purified
Conjugation:	Unconjugated
Storage:	Store at -20°C as received.
Stability:	Stable for 12 months from date of receipt.
Predicted Protein Size:	64 kDa
Gene Name:	polypeptide N-acetylgalactosaminyltransferase-like 6
Database Link:	NP_001030017 Entrez Gene 442117 Human Q49A17
Background:	GALNTL6 catalyzes the initial reaction in O-linked oligosaccharide biosynthesis, the transfer of an N-acetyl-D-galactosamine residue to a serine or threonine residue on the protein receptor.
Synonyms:	GalNAc-T6L; GALNACT20; GALNT17
Note:	Immunogen Sequence Homology: Rat: 100%; Human: 100%; Mouse: 100%; Bovine: 100%; Rabbit: 100%; Dog: 93%; Zebrafish: 93%; Horse: 83%

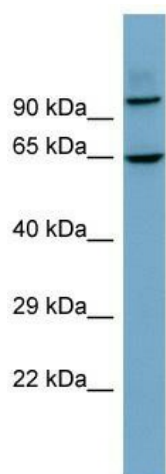


[View online »](#)

Protein Families: Transmembrane

Protein Pathways: Metabolic pathways, O-Glycan biosynthesis

Product images:



Host: Rabbit; Target Name: GALNTL6; Sample
Tissue: THP-1 Whole cell lysates; Antibody
Dilution: 1.0 ug/ml