

Product datasheet for **TA336020**

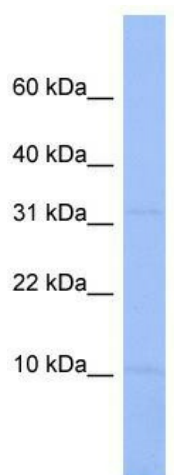
C18orf32 Rabbit Polyclonal Antibody

Product data:

| | |
|-------------------------|--|
| Product Type: | Primary Antibodies |
| Applications: | WB |
| Recommended Dilution: | WB |
| Reactivity: | Human |
| Host: | Rabbit |
| Isotype: | IgG |
| Clonality: | Polyclonal |
| Immunogen: | The immunogen for Anti-C18orf32 Antibody: synthetic peptide directed towards the middle region of human C18orf32. Synthetic peptide located within the following region: PLVSPFVSRIWPKKAIQESNDTNKGKVNFKGADMNGLPTKGPTEICDKKK |
| Formulation: | Liquid. Purified antibody supplied in 1x PBS buffer with 0.09% (w/v) sodium azide and 2% sucrose. |
| Purification: | Affinity Purified |
| Conjugation: | Unconjugated |
| Storage: | Store at -20°C as received. |
| Stability: | Stable for 12 months from date of receipt. |
| Predicted Protein Size: | 9 kDa |
| Gene Name: | chromosome 18 open reading frame 32 |
| Database Link: | NP_001030177 Entrez Gene 497661 Human Q8TCD1 |
| Background: | The function of this protein remains unknown. |
| Synonyms: | FLJ23458 |
| Note: | Immunogen Sequence Homology: Human: 100%; Bovine: 77% |



[View online »](#)

Product images:

WB Suggested Anti-C18orf32 Antibody Titration:
0.2-1 ug/ml; ELISA Titer: 1:312500; Positive
Control: Jurkat cell lysate