

## Product datasheet for **TA336018**

### AGBL5 Rabbit Polyclonal Antibody

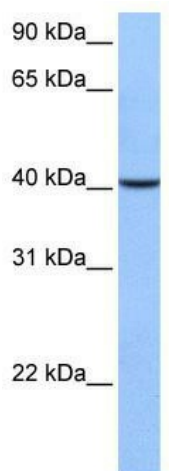
#### Product data:

Product Type:	Primary Antibodies
Applications:	WB
Recommended Dilution:	WB
Reactivity:	Human
Host:	Rabbit
Isotype:	IgG
Clonality:	Polyclonal
Immunogen:	The immunogen for Anti-AGBL5 Antibody: synthetic peptide directed towards the C terminal of human AGBL5. Synthetic peptide located within the following region: NLRAWMLKHVRNSRGLSSTLNVGVNKKRGLRTPPKSHNGLPVSSENTLS
Formulation:	Liquid. Purified antibody supplied in 1x PBS buffer with 0.09% (w/v) sodium azide and 2% sucrose. <i>Note that this product is shipped as lyophilized powder to China customers.</i>
Purification:	Affinity Purified
Conjugation:	Unconjugated
Storage:	Store at -20°C as received.
Stability:	Stable for 12 months from date of receipt.
Predicted Protein Size:	47 kDa
Gene Name:	ATP/GTP binding protein-like 5
Database Link:	<a href="#">NP_001030584</a> <a href="#">Entrez Gene 60509 Human</a> <a href="#">Q8NDL9</a>
Background:	AGBL5 belongs to the peptidase M14 family. The exact function of AGBL5 remains unknown.
Synonyms:	CCP5; RP75
Note:	Immunogen Sequence Homology: Human: 100%; Rat: 86%; Horse: 86%; Pig: 85%; Guinea pig: 85%; Mouse: 79%; Bovine: 79%



[View online »](#)

## Product images:



WB Suggested Anti-AGBL5 Antibody Titration: 0.2-1 ug/ml; Positive Control: Human Liver