

## Product datasheet for **TA336017**

### Sec8 (EXOC4) Rabbit Polyclonal Antibody

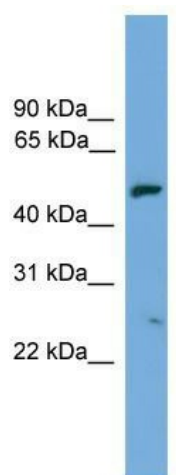
#### Product data:

Product Type:	Primary Antibodies
Applications:	WB
Recommended Dilution:	WB
Reactivity:	Human
Host:	Rabbit
Isotype:	IgG
Clonality:	Polyclonal
Immunogen:	The immunogen for Anti-EXOC4 Antibody: synthetic peptide directed towards the N terminal of human EXOC4. Synthetic peptide located within the following region: TAIRTYQSITERITNSRNKIKQVKENLLSCKMLLHCKRDELRLKLWIEGIE
Formulation:	Liquid. Purified antibody supplied in 1x PBS buffer with 0.09% (w/v) sodium azide and 2% sucrose. <i>Note that this product is shipped as lyophilized powder to China customers.</i>
Purification:	Affinity Purified
Conjugation:	Unconjugated
Storage:	Store at -20°C as received.
Stability:	Stable for 12 months from date of receipt.
Predicted Protein Size:	54 kDa
Gene Name:	exocyst complex component 4
Database Link:	<a href="#">NP_001032203</a> <a href="#">Entrez Gene 60412 Human</a> <a href="#">Q96A65</a>
Background:	The specific function of this protein remains unknown.
Synonyms:	SEC8; SEC8L1; Sec8p
Note:	Immunogen Sequence Homology: Dog: 100%; Pig: 100%; Rat: 100%; Horse: 100%; Human: 100%; Mouse: 100%; Bovine: 100%; Rabbit: 100%; Zebrafish: 93%
Protein Pathways:	Tight junction



[View online »](#)

## Product images:



WB Suggested Anti-EXOC4 Antibody Titration: 0.2-1 ug/ml; ELISA Titer: 1:312500; Positive Control: Human Placenta