

Product datasheet for **TA336015**

NrCAM Rabbit Polyclonal Antibody

Product data:

Product Type:	Primary Antibodies
Applications:	IHC, WB
Recommended Dilution:	WB, IHC
Reactivity:	Human
Host:	Rabbit
Isotype:	IgG
Clonality:	Polyclonal
Immunogen:	The immunogen for Anti-NRCAM Antibody: synthetic peptide directed towards the N terminal of human NRCAM. Synthetic peptide located within the following region: NLSDTEFYGAKSSRERPPPTFLTPEGNASNKEELRGNVLSLEICIAEGLPTP
Formulation:	Liquid. Purified antibody supplied in 1x PBS buffer with 0.09% (w/v) sodium azide and 2% sucrose. <i>Note that this product is shipped as lyophilized powder to China customers.</i>
Purification:	Protein A purified
Conjugation:	Unconjugated
Storage:	Store at -20°C as received.
Stability:	Stable for 12 months from date of receipt.
Predicted Protein Size:	141 kDa
Gene Name:	neuronal cell adhesion molecule
Database Link:	NP_001032209 Entrez Gene 4897 Human Q92823



[View online »](#)

Background:

Cell adhesion molecules (CAMs) are members of the immunoglobulin superfamily. NRCAM is a neuronal cell adhesion molecule with multiple immunoglobulin-like C2-type domains and fibronectin type-III domains. This ankyrin-binding protein is involved in neuron-neuron adhesion and promotes directional signaling during axonal cone growth. NRCAM may also play a general role in cell-cell communication via signaling from its intracellular domain to the actin cytoskeleton during directional cell migration. Allelic variants of its gene have been associated with autism and addiction vulnerability. Cell adhesion molecules (CAMs) are members of the immunoglobulin superfamily. This gene encodes a neuronal cell adhesion molecule with multiple immunoglobulin-like C2-type domains and fibronectin type-III domains. This ankyrin-binding protein is involved in neuron-neuron adhesion and promotes directional signaling during axonal cone growth. This gene is also expressed in non-neural tissues and may play a general role in cell-cell communication via signaling from its intracellular domain to the actin cytoskeleton during directional cell migration. Allelic variants of this gene have been associated with autism and addiction vulnerability. Alternative splicing results in multiple transcript variants encoding different isoforms.

Synonyms:

KIAA0343; MGC138845; MGC138846

Note:

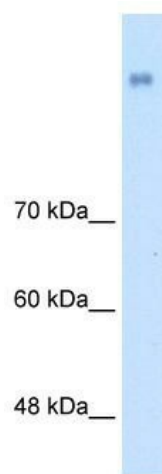
Immunogen Sequence Homology: Rat: 100%; Human: 100%; Rabbit: 100%; Pig: 93%; Horse: 93%; Mouse: 93%; Guinea pig: 93%; Dog: 86%; Bovine: 86%

Protein Families:

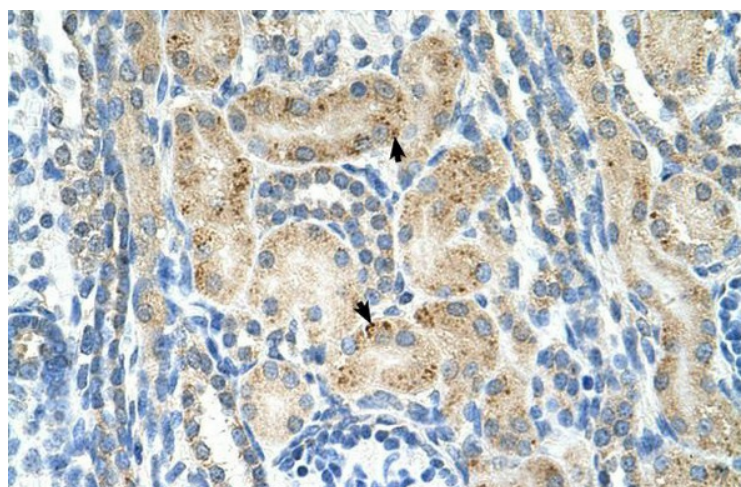
Druggable Genome, Transmembrane

Protein Pathways:

Cell adhesion molecules (CAMs)

Product images:

WB Suggested Anti-NRCAM Antibody Titration:
2.5 ug/ml; Positive Control: HepG2 cell lysate



Human kidney