

## Product datasheet for **TA336012**

### ACPL2 (PXYLP1) Rabbit Polyclonal Antibody

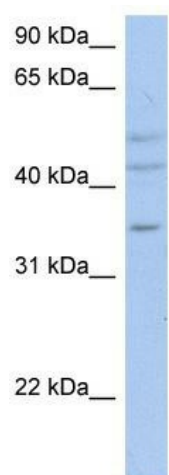
#### Product data:

Product Type:	Primary Antibodies
Applications:	WB
Recommended Dilution:	WB
Reactivity:	Human
Host:	Rabbit
Isotype:	IgG
Clonality:	Polyclonal
Immunogen:	The immunogen for Anti-ACPL2 Antibody: synthetic peptide directed towards the N terminal of human ACPL2. Synthetic peptide located within the following region: PSVAERSMEGHAPHHFKLVSVHVFIRHGDRYPLYVIPKTKRPEIDCTLVA
Formulation:	Liquid. Purified antibody supplied in 1x PBS buffer with 0.09% (w/v) sodium azide and 2% sucrose. <i>Note that this product is shipped as lyophilized powder to China customers.</i>
Purification:	Affinity Purified
Conjugation:	Unconjugated
Storage:	Store at -20°C as received.
Stability:	Stable for 12 months from date of receipt.
Predicted Protein Size:	55 kDa
Gene Name:	2-phosphoxylose phosphatase 1
Database Link:	<a href="#">NP_001032249</a> <a href="#">Entrez Gene 92370 Human</a> <a href="#">Q8TE99</a>
Background:	The specific function of the protein remains unknown.
Synonyms:	ACPL2; HEL124; XYLP
Note:	Immunogen Sequence Homology: Dog: 100%; Pig: 100%; Rat: 100%; Human: 100%; Mouse: 100%; Rabbit: 100%; Horse: 93%; Bovine: 93%; Guinea pig: 86%; Zebrafish: 79%
Protein Families:	Transmembrane



[View online »](#)

## Product images:



WB Suggested Anti-ACPL2 Antibody Titration: 0.2-1 ug/ml; ELISA Titer: 1: 312500; Positive Control: OVCAR-3 cell lysate