

## Product datasheet for **TA336010**

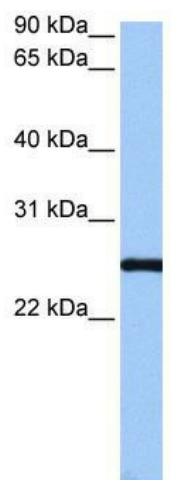
### CCDC46 (CEP112) Rabbit Polyclonal Antibody

#### Product data:

Product Type:	Primary Antibodies
Applications:	WB
Recommended Dilution:	WB
Reactivity:	Human
Host:	Rabbit
Isotype:	IgG
Clonality:	Polyclonal
Immunogen:	The immunogen for Anti-CEP112 Antibody: synthetic peptide directed towards the C terminal of human CEP112. Synthetic peptide located within the following region: IEKEYTQKLAKSSQIIAELQTTISSLKEENSQQQLAAERRLQDVRQKFED
Formulation:	Liquid. Purified antibody supplied in 1x PBS buffer with 0.09% (w/v) sodium azide and 2% sucrose. <i>Note that this product is shipped as lyophilized powder to China customers.</i>
Purification:	Affinity Purified
Conjugation:	Unconjugated
Storage:	Store at -20°C as received.
Stability:	Stable for 12 months from date of receipt.
Predicted Protein Size:	23 kDa
Gene Name:	centrosomal protein 112
Database Link:	<a href="#">NP_001032402</a> <a href="#">Entrez Gene 201134 Human</a> <a href="#">Q8N8E3</a>
Background:	CEP112 is a protein with filament, myosin tail and ATPase domains. Orthologs of the gene exist in mouse, rat and chimp.
Synonyms:	CCDC46; MACOCO
Note:	Immunogen Sequence Homology: Human: 100%; Dog: 93%; Horse: 93%; Rabbit: 93%; Rat: 86%; Mouse: 86%



[View online »](#)

**Product images:**

WB Suggested Anti-CEP112 Antibody Titration:  
0.2-1 ug/ml; Positive Control: HepG2 cell lysate