

Product datasheet for **TA336007**

SIL1 Rabbit Polyclonal Antibody

Product data:

Product Type:	Primary Antibodies
Applications:	WB
Recommended Dilution:	WB
Reactivity:	Human
Host:	Rabbit
Isotype:	IgG
Clonality:	Polyclonal
Immunogen:	The immunogen for Anti-SIL1 Antibody: synthetic peptide directed towards the C terminal of human SIL1. Synthetic peptide located within the following region: KLQYRQVHLLPGLWEQGWCEITAHLLALPEHDAREKVLQTLGVLLTTCR
Formulation:	Liquid. Purified antibody supplied in 1x PBS buffer with 0.09% (w/v) sodium azide and 2% sucrose. <i>Note that this product is shipped as lyophilized powder to China customers.</i>
Purification:	Affinity Purified
Conjugation:	Unconjugated
Storage:	Store at -20°C as received.
Stability:	Stable for 12 months from date of receipt.
Predicted Protein Size:	49 kDa
Gene Name:	SIL1 nucleotide exchange factor
Database Link:	NP_001032722 Entrez Gene 64374 Human Q9H173



[View online »](#)

Background:

SIL1 is a resident endoplasmic reticulum (ER), N-linked glycoprotein with an N-terminal ER targeting sequence, 2 putative N-glycosylation sites, and a C-terminal ER retention signal. This protein functions as a nucleotide exchange factor for another unfolded protein response protein. Mutations in its gene have been associated with Marinesco-Sjogren syndrome. This gene encodes a resident endoplasmic reticulum (ER), N-linked glycoprotein with an N-terminal ER targeting sequence, 2 putative N-glycosylation sites, and a C-terminal ER retention signal. This protein functions as a nucleotide exchange factor for another unfolded protein response protein. Mutations in this gene have been associated with Marinesco-Sjogren syndrome. Alternate transcriptional splice variants have been characterized.

Synonyms:

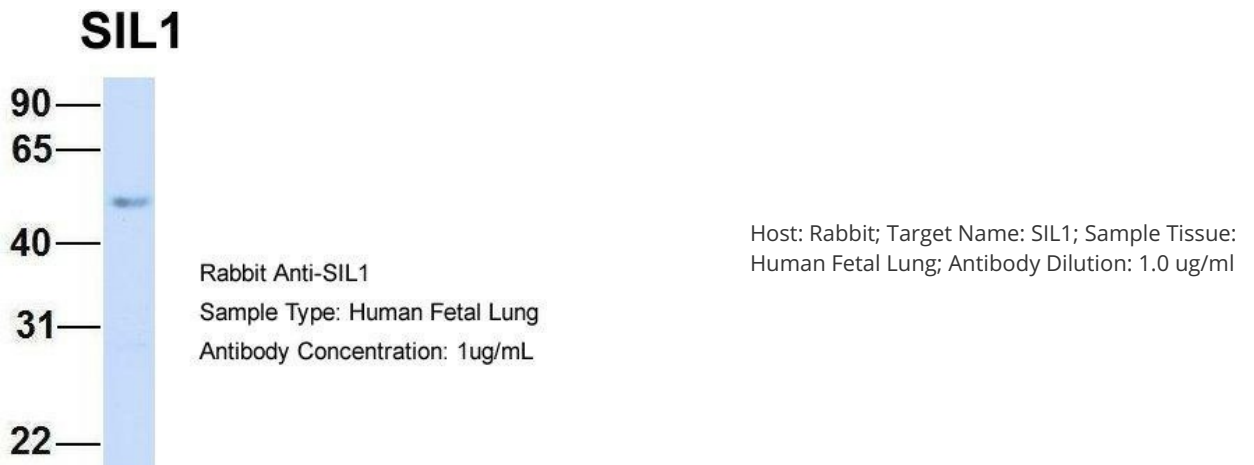
BAP; MSS; ULG5

Note:

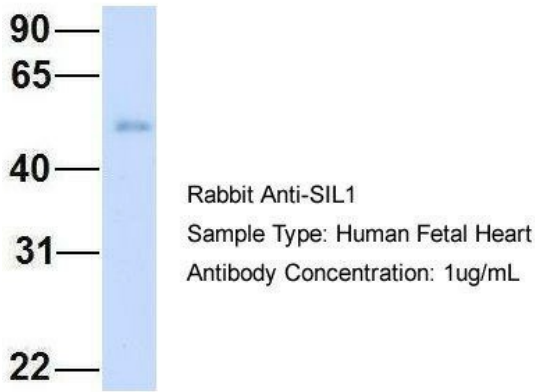
Immunogen Sequence Homology: Dog: 100%; Pig: 100%; Rat: 100%; Horse: 100%; Human: 100%; Mouse: 100%; Bovine: 100%; Rabbit: 100%; Guinea pig: 100%

Protein Families:

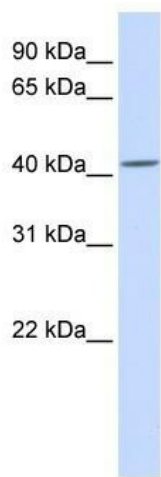
Protease, Secreted Protein, Transmembrane

Product images:

SIL1



Host: Rabbit; Target Name: SIL1; Sample Tissue: Human Fetal Heart; Antibody Dilution: 1.0 ug/ml



WB Suggested Anti-SIL1 Antibody Titration: 0.2-1 ug/ml; ELISA Titer: 1: 312500; Positive Control: HeLa cell lysate; SIL1 is supported by BioGPS gene expression data to be expressed in HeLa