

Product datasheet for **TA336006**

PARL Rabbit Polyclonal Antibody

Product data:

Product Type:	Primary Antibodies
Applications:	IHC, WB
Recommended Dilution:	WB, IHC
Reactivity:	Human
Host:	Rabbit
Isotype:	IgG
Clonality:	Polyclonal
Immunogen:	The immunogen for Anti-PARL Antibody: synthetic peptide directed towards the N terminal of human PARL. Synthetic peptide located within the following region: SLIKPLFFTVGFTGCAFGSAAIWQYESLKSRVQSYFDGIKADWLDSIRPQ
Formulation:	Liquid. Purified antibody supplied in 1x PBS buffer with 0.09% (w/v) sodium azide and 2% sucrose. <i>Note that this product is shipped as lyophilized powder to China customers.</i>
Purification:	Affinity Purified
Conjugation:	Unconjugated
Storage:	Store at -20°C as received.
Stability:	Stable for 12 months from date of receipt.
Predicted Protein Size:	36 kDa
Gene Name:	presenilin associated rhomboid like
Database Link:	NP_001032728 Entrez Gene 55486 Human Q9H300



[View online »](#)

Background:

PARL is a mitochondrial integral membrane protein. Following proteolytic processing of this protein, a small peptide (P-beta) is formed and translocated to the nucleus. PARL may be involved in signal transduction via regulated intramembrane proteolysis of membrane-tethered precursor proteins. Variation in its gene has been associated with increased risk for type 2 diabetes. This gene encodes a mitochondrial integral membrane protein. Following proteolytic processing of this protein, a small peptide (P-beta) is formed and translocated to the nucleus. This gene may be involved in signal transduction via regulated intramembrane proteolysis of membrane-tethered precursor proteins. Variation in this gene has been associated with increased risk for type 2 diabetes. Alternative splicing results in multiple transcript variants encoding different isoforms.

Synonyms:

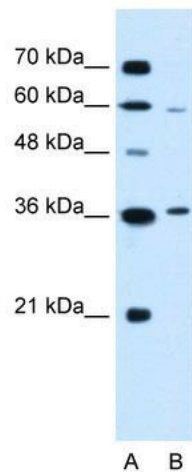
PRO2207; PSARL; PSARL1; PSENIP2; RHBDS1

Note:

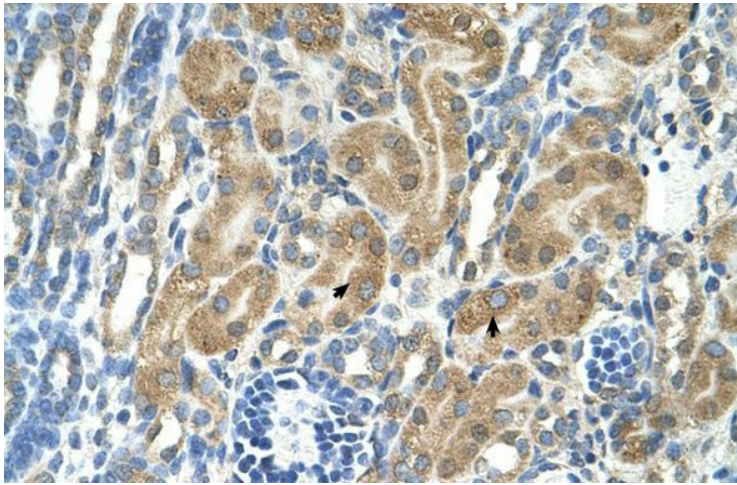
Immunogen Sequence Homology: Dog: 100%; Pig: 100%; Rat: 100%; Horse: 100%; Human: 100%; Mouse: 100%; Rabbit: 100%; Bovine: 93%; Guinea pig: 93%; Zebrafish: 91%

Protein Families:

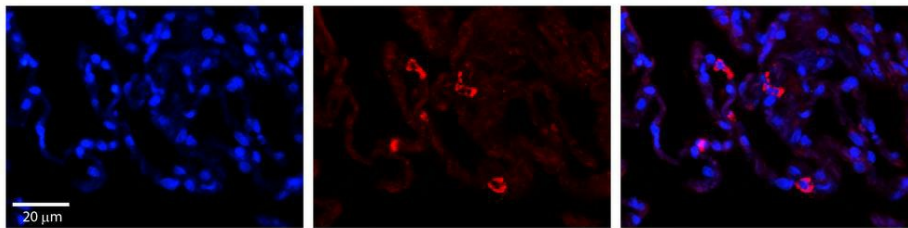
Protease, Transmembrane

Product images:

WB Suggested Anti-PARL Antibody Titration: 0.5 ug/ml; Positive Control: Jurkat cell lysate; PARL is supported by BioGPS gene expression data to be expressed in Jurkat



Human kidney



Rabbit Anti-PARL Antibody; Formalin Fixed Paraffin Embedded Tissue: Human Lung Tissue; Observed Staining: Cytoplasmic in alveolar type I cells; Primary Antibody Concentration: 1: 100; Other Working Concentrations: 1/600; Secondary Antibody: Donkey anti-Rabbit-Cy3; Secondary Antibody Concentration: 1: 200; Magnification: 20X; Exposure Time: 0.5–2.0 sec;