

Product datasheet for **TA336005**

B3GALNT1 Rabbit Polyclonal Antibody

Product data:

Product Type:	Primary Antibodies
Applications:	WB
Recommended Dilution:	WB
Reactivity:	Human
Host:	Rabbit
Isotype:	IgG
Clonality:	Polyclonal
Immunogen:	The immunogen for Anti-B3GALNT1 Antibody: synthetic peptide directed towards the middle region of human B3GALNT1. Synthetic peptide located within the following region: PRIYEMMGHVKPIKFEDVYVGICLNLLKVNIIHIPEDTNLFFLYRIHLDVC
Formulation:	Liquid. Purified antibody supplied in 1x PBS buffer with 0.09% (w/v) sodium azide and 2% sucrose. <i>Note that this product is shipped as lyophilized powder to China customers.</i>
Purification:	Affinity Purified
Conjugation:	Unconjugated
Storage:	Store at -20°C as received.
Stability:	Stable for 12 months from date of receipt.
Predicted Protein Size:	39 kDa
Gene Name:	beta-1,3-N-acetylgalactosaminyltransferase 1 (globoside blood group)
Database Link:	NP_001033717 Entrez Gene 8706 Human O75752
Background:	This gene is a member of the beta-1,3-galactosyltransferase (beta3GalT) gene family. B3GALNT1 is type II membrane-bound glycoproteins with diverse enzymatic functions using different donor substrates (UDP-galactose and UDP-N-acetylglucosamine) and differ
Synonyms:	B3GALT3; beta3Gal-T3; galT3; Gb4Cer; GLCT3; GLOB; P; P1
Note:	Immunogen Sequence Homology: Human: 100%; Dog: 93%; Pig: 93%; Rat: 93%; Horse: 93%; Mouse: 93%; Bovine: 93%; Guinea pig: 93%; Rabbit: 79%

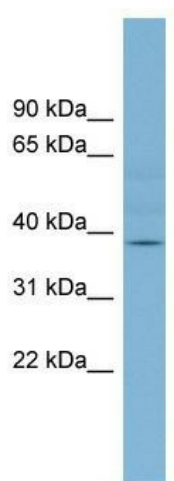


[View online »](#)

Protein Families: Transmembrane

Protein Pathways: Glycosphingolipid biosynthesis - globo series, Metabolic pathways

Product images:



WB Suggested Anti-B3GALNT1 Antibody Titration:
0.2-1 ug/ml; ELISA Titer: 1: 62500; Positive
Control: Human Stomach