

Product datasheet for **TA336002**

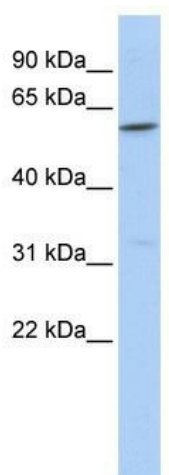
CEACAM16 Rabbit Polyclonal Antibody

Product data:

Product Type:	Primary Antibodies
Applications:	WB
Recommended Dilution:	WB
Reactivity:	Human
Host:	Rabbit
Isotype:	IgG
Clonality:	Polyclonal
Immunogen:	The immunogen for Anti-CEACAM16 Antibody: synthetic peptide directed towards the middle region of human CEACAM16. Synthetic peptide located within the following region: LLSGSASVVVKLSAAAVATMIVPVPTKPTREGQDVTTLTVQGYPKDLLVYAW
Formulation:	Liquid. Purified antibody supplied in 1x PBS buffer with 0.09% (w/v) sodium azide and 2% sucrose.
Purification:	Affinity Purified
Conjugation:	Unconjugated
Storage:	Store at -20°C as received.
Stability:	Stable for 12 months from date of receipt.
Predicted Protein Size:	53 kDa
Gene Name:	carcinoembryonic antigen related cell adhesion molecule 16
Database Link:	NP_001034302 Entrez Gene 388551 Human Q2WEN9
Background:	CEACAM16 belongs to the immunoglobulin superfamily, CEA family.
Synonyms:	CEAL2; DFNA4B
Note:	Immunogen Sequence Homology: Pig: 100%; Human: 100%; Mouse: 100%; Guinea pig: 100%; Dog: 93%; Rat: 93%; Rabbit: 92%; Horse: 91%; Bovine: 86%
Protein Families:	Transmembrane



[View online »](#)

Product images:

WB Suggested Anti-CEACAM16 Antibody Titration:
0.2-1 ug/ml; ELISA Titer: 1: 312500; Positive
Control: Human brain