

Product datasheet for **TA336000**

DPP6 Rabbit Polyclonal Antibody

Product data:

Product Type:	Primary Antibodies
Applications:	WB
Recommended Dilution:	WB
Reactivity:	Human, Mouse
Host:	Rabbit
Isotype:	IgG
Clonality:	Polyclonal
Immunogen:	The immunogen for Anti-DPP6 Antibody: synthetic peptide directed towards the middle region of human DPP6. Synthetic peptide located within the following region: AAINDSRVPIMELPTYTGSYPTVKPYHYPKAGSENPSISLHVIGLNGPT
Formulation:	Liquid. Purified antibody supplied in 1x PBS buffer with 0.09% (w/v) sodium azide and 2% sucrose. <i>Note that this product is shipped as lyophilized powder to China customers.</i>
Purification:	Affinity Purified
Conjugation:	Unconjugated
Storage:	Store at -20°C as received.
Stability:	Stable for 12 months from date of receipt.
Predicted Protein Size:	91 kDa
Gene Name:	dipeptidyl peptidase like 6
Database Link:	NP_001034439 Entrez Gene 13483 Mouse Entrez Gene 1804 Human P42658



[View online »](#)

Background:

DPP6 is a single-pass type II membrane protein that is a member of the S9B family in clan SC of the serine proteases. This protein has no detectable protease activity, most likely due to the absence of the conserved serine residue normally present in the catalytic domain of serine proteases. However, it does bind specific voltage-gated potassium channels and alters their expression and biophysical properties. This gene encodes a single-pass type II membrane protein that is a member of the S9B family in clan SC of the serine proteases. This protein has no detectable protease activity, most likely due to the absence of the conserved serine residue normally present in the catalytic domain of serine proteases. However, it does bind specific voltage-gated potassium channels and alters their expression and biophysical properties. Alternate transcriptional splice variants, encoding different isoforms, have been characterized.

Synonyms:

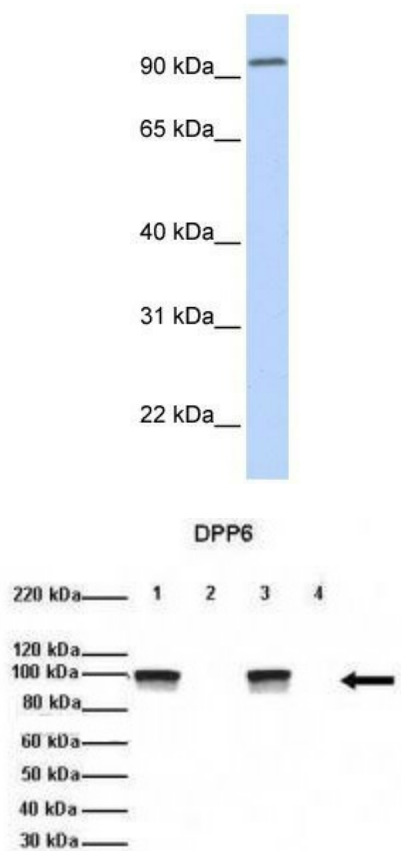
DPL1; DPPX; MRD33; VF2

Note:

Immunogen Sequence Homology: Pig: 100%; Rat: 100%; Human: 100%; Mouse: 100%; Rabbit: 100%; Guinea pig: 100%; Dog: 93%; Horse: 93%; Bovine: 93%; Zebrafish: 91%

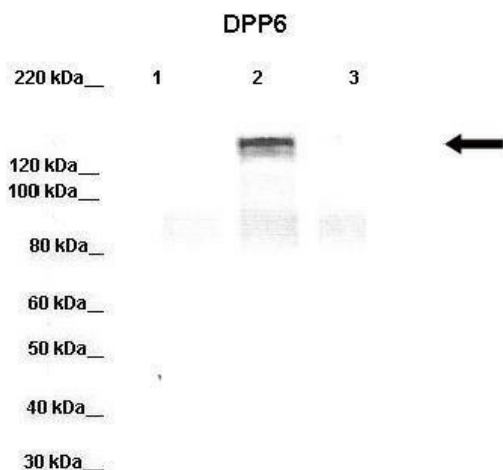
Protein Families:

Druggable Genome, Protease, Transmembrane

Product images:


WB Suggested Anti-DPP6 Antibody Titration: 0.2-1 ug/ml; ELISA Titer: 1: 312500; Positive Control: Human brain

Researcher: Jeanne M. Nerbonne, Arvin Soepriatna, Washington University Medical School; Application: Western blotting; Species+tissue/cell type: Mouse WT and DPP6 ^{-/-} brain; How many ug's of tissue/cell lysate run on the gel: 1. 20ug Mouse WT brain extract 2. 20ug Mouse DPP6 ^{-/-} brain extract 3. 20ug Mouse WT brain extract 4. 20ug Mouse DPP6 ^{-/-} brain extract; Primary antibody dilution: 1: 1000; Secondary antibody: Donkey anti-rabbit HRP; Secondary antibody dilution: 1: 10,000



Lanes: Lane 1: 20ug HEK-293 cell lysate; Lane 2: 20ug hDPP6-YFP transfected HEK-293 lysate; Lane 3: 20ug hDPP10-YFP transfected HEK-293 lysate; Primary Antibody Dilution: 1: 1000; Secondary Antibody: Donkey anti-rabbit-HRP; Secondary Antibody Dilution: 1: 10, 000; Gene Name: DPP6 a; Submitted by: Jeanne M. Nerbonne, Arvin Soepriatna, Washington University Medical School Department of Developmental Biology;