

Product datasheet for **TA335999**

HEPACAM2 Rabbit Polyclonal Antibody

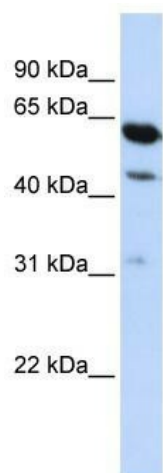
Product data:

Product Type:	Primary Antibodies
Applications:	WB
Recommended Dilution:	WB
Reactivity:	Human
Host:	Rabbit
Isotype:	IgG
Clonality:	Polyclonal
Immunogen:	The immunogen for Anti-HEPACAM2 Antibody: synthetic peptide directed towards the middle region of human LOC253012. Synthetic peptide located within the following region: NYSCLVRNPVSEMEDIIIMPIIYGPYGLQVNSDKGLKVGFTVDLGEA
Formulation:	Liquid. Purified antibody supplied in 1x PBS buffer with 0.09% (w/v) sodium azide and 2% sucrose. <i>Note that this product is shipped as lyophilized powder to China customers.</i>
Purification:	Affinity Purified
Conjugation:	Unconjugated
Storage:	Store at -20°C as received.
Stability:	Stable for 12 months from date of receipt.
Predicted Protein Size:	51 kDa
Gene Name:	HEPACAM family member 2
Database Link:	NP_001034461 Entrez Gene 253012 Human A8MVW5
Background:	The function of the LOC253012 protein remains unknown.
Synonyms:	MIKI
Note:	Immunogen Sequence Homology: Rat: 100%; Human: 100%; Mouse: 100%; Rabbit: 100%; Dog: 93%; Pig: 93%; Horse: 93%; Guinea pig: 93%; Bovine: 86%
Protein Families:	Transmembrane



[View online »](#)

Product images:



WB Suggested Anti-HEPACAM2 Antibody
Titration: 0.2-1 ug/ml; ELISA Titer: 1: 62500;
Positive Control: HepG2 cell lysate