

## Product datasheet for **TA335998**

### HEPACAM2 Rabbit Polyclonal Antibody

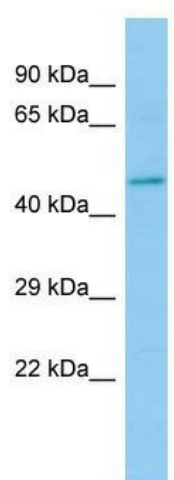
#### Product data:

Product Type:	Primary Antibodies
Applications:	WB
Recommended Dilution:	WB
Reactivity:	Rat
Host:	Rabbit
Isotype:	IgG
Clonality:	Polyclonal
Immunogen:	The immunogen for Anti-Hepacam2 Antibody is: synthetic peptide directed towards the N-terminal region of Rat Hepacam2. Synthetic peptide located within the following region: VTPSHTVHGIRGQALYLPVHYGFHTPASDIQIIWLFERSHTTPKYLLGS
Formulation:	Liquid. Purified antibody supplied in 1x PBS buffer with 0.09% (w/v) sodium azide and 2% sucrose.
Purification:	Affinity Purified
Conjugation:	Unconjugated
Storage:	Store at -20°C as received.
Stability:	Stable for 12 months from date of receipt.
Predicted Protein Size:	50 kDa
Gene Name:	HEPACAM family member 2
Database Link:	<a href="#">NP_001034461</a> <a href="#">Entrez Gene 296846 Rat A8MWW5</a>
Background:	The function of this protein remains unknown.
Synonyms:	MIKI
Note:	Immunogen Sequence Homology: Dog: 100%; Pig: 100%; Rat: 100%; Horse: 100%; Human: 100%; Mouse: 100%; Bovine: 100%; Rabbit: 100%; Guinea pig: 86%
Protein Families:	Transmembrane



[View online »](#)

## Product images:



WB Suggested Anti-Hepacam2 Antibody;  
Titration: 1.0 ug/ml; Positive Control: Rat Small  
Intestine