

## Product datasheet for **TA335997**

### **C9orf68 (SPATA6L) Rabbit Polyclonal Antibody**

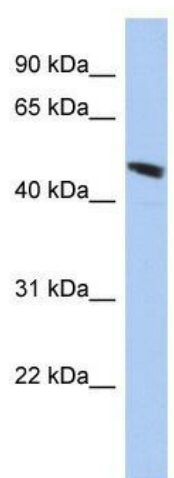
#### **Product data:**

Product Type:	Primary Antibodies
Applications:	WB
Recommended Dilution:	WB
Reactivity:	Human
Host:	Rabbit
Isotype:	IgG
Clonality:	Polyclonal
Immunogen:	The immunogen for Anti-C9orf68 Antibody: synthetic peptide directed towards the middle region of human C9orf68. Synthetic peptide located within the following region: CLDSSQFGKSSSSKQGDADFHGKASFATYQHSTSPGPLDQPLLRRERFHPG
Formulation:	Liquid. Purified antibody supplied in 1x PBS buffer with 0.09% (w/v) sodium azide and 2% sucrose. <i>Note that this product is shipped as lyophilized powder to China customers.</i>
Purification:	Affinity Purified
Conjugation:	Unconjugated
Storage:	Store at -20°C as received.
Stability:	Stable for 12 months from date of receipt.
Predicted Protein Size:	45 kDa
Gene Name:	spermatogenesis associated 6 like
Database Link:	<a href="#">NP_001034484</a> <a href="#">Entrez Gene 55064 Human</a> <a href="#">Q8N4H0</a>
Background:	The specific function of this protein remains unknown.
Synonyms:	bA6J24.2; C9orf68
Note:	Immunogen Sequence Homology: Human: 100%



[View online »](#)

## Product images:



WB Suggested Anti-C9orf68 Antibody Titration:  
0.2-1 ug/ml; ELISA Titer: 1:1562500; Positive  
Control: HepG2 cell lysate