

## Product datasheet for **TA335994**

### **KIAA0317 (AREL1) Rabbit Polyclonal Antibody**

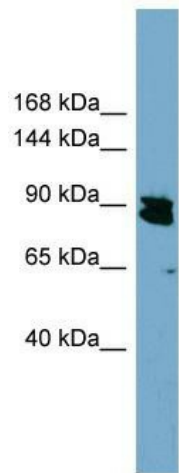
#### **Product data:**

<b>Product Type:</b>	Primary Antibodies
<b>Applications:</b>	IHC, WB
<b>Recommended Dilution:</b>	WB
<b>Reactivity:</b>	Human
<b>Host:</b>	Rabbit
<b>Isotype:</b>	IgG
<b>Clonality:</b>	Polyclonal
<b>Immunogen:</b>	The immunogen for Anti-KIAA0317 Antibody: synthetic peptide directed towards the N terminal of human KIAA0317. Synthetic peptide located within the following region: LTCGQPHTLQIVPRDEYDNPTNNSMSLRDEHNYTLSIHELGPQEEESTGV
<b>Formulation:</b>	Liquid. Purified antibody supplied in 1x PBS buffer with 0.09% (w/v) sodium azide and 2% sucrose.
<b>Purification:</b>	Affinity Purified
<b>Conjugation:</b>	Unconjugated
<b>Storage:</b>	Store at -20°C as received.
<b>Stability:</b>	Stable for 12 months from date of receipt.
<b>Predicted Protein Size:</b>	94 kDa
<b>Gene Name:</b>	apoptosis resistant E3 ubiquitin protein ligase 1
<b>Database Link:</b>	<a href="#">NP_001034568</a> <a href="#">Entrez Gene 9870 Human</a> <a href="#">O15033</a>
<b>Background:</b>	KIAA0317 contains 1 filamin repeat and 1 HECT (E6AP-type E3 ubiquitin-protein ligase) domain. The exact function of KIAA0317 remains unknown.
<b>Synonyms:</b>	KIAA0317
<b>Note:</b>	Immunogen Sequence Homology: Dog: 100%; Pig: 100%; Rat: 100%; Horse: 100%; Human: 100%; Mouse: 100%; Bovine: 100%; Rabbit: 100%; Guinea pig: 100%; Zebrafish: 85%
<b>Protein Families:</b>	Druggable Genome, Transmembrane

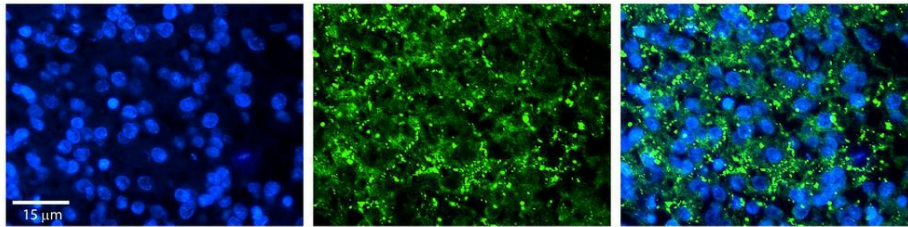


[View online »](#)

## Product images:



WB Suggested Anti-KIAA0317 Antibody Titration: 0.2-1 ug/ml; Positive Control: HT1080 cell lysate; AREL1 is supported by BioGPS gene expression data to be expressed in HT1080



Rabbit Anti-AREL1 Antibody; Formalin Fixed Paraffin Embedded Tissue: Human Pineal Tissue; Observed Staining: Cytoplasmic in vesicles in cell bodies of pinealocytes; Primary Antibody Concentration: 1: 100; Secondary Antibody: Donkey anti-Rabbit-Cy3; Secondary Antibody Concentration: 1: 200; Magnification: 20X; Exposure Time: 0.5–2.0 sec;