

Product datasheet for **TA335993**

KREMEN1 Rabbit Polyclonal Antibody

Product data:

Product Type:	Primary Antibodies
Applications:	WB
Recommended Dilution:	WB
Reactivity:	Human
Host:	Rabbit
Isotype:	IgG
Clonality:	Polyclonal
Immunogen:	The immunogen for Anti-KREMEN1 Antibody: synthetic peptide directed towards the N terminal of human KREMEN1. Synthetic peptide located within the following region: WKYCEIPACQMPGNLGCYKDHGNPPPLTGTSKTSNKLTIQTCISFCRSQR
Formulation:	Liquid. Purified antibody supplied in 1x PBS buffer with 0.09% (w/v) sodium azide and 2% sucrose. <i>Note that this product is shipped as lyophilized powder to China customers.</i>
Purification:	Affinity Purified
Conjugation:	Unconjugated
Storage:	Store at -20°C as received.
Stability:	Stable for 12 months from date of receipt.
Predicted Protein Size:	50 kDa
Gene Name:	kringle containing transmembrane protein 1
Database Link:	NP_001034659 Entrez Gene 83999 Human Q96MU8



[View online »](#)

Background:

KREMEN1 is a high-affinity dickkopf homolog 1 (DKK1) transmembrane receptor that functionally cooperates with DKK1 to block wntless (WNT)/beta-catenin signaling. It is a component of a membrane complex that modulates canonical WNT signaling through lipoprotein receptor-related protein 6 (LRP6). It contains extracellular kringle, WSC, and CUB domains. This gene encodes a high-affinity dickkopf homolog 1 (DKK1) transmembrane receptor that functionally cooperates with DKK1 to block wntless (WNT)/beta-catenin signaling. The encoded protein is a component of a membrane complex that modulates canonical WNT signaling through lipoprotein receptor-related protein 6 (LRP6). It contains extracellular kringle, WSC, and CUB domains. Alternatively spliced transcript variants encoding distinct isoforms have been observed for this gene.

Synonyms:

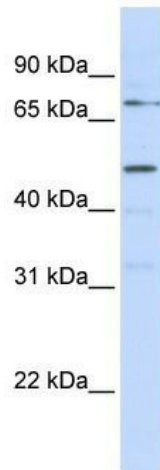
KREMEN; KRM1

Note:

Immunogen Sequence Homology: Pig: 100%; Rat: 100%; Human: 100%; Mouse: 100%; Bovine: 100%; Rabbit: 100%; Guinea pig: 100%; Dog: 93%; Horse: 93%

Protein Families:

Druggable Genome, Transmembrane

Product images:

WB Suggested Anti-KREMEN1 Antibody Titration:
0.2-1 ug/ml; ELISA Titer: 1: 62500; Positive
Control: MCF7 cell lysate