

Product datasheet for **TA335990**

ZDHHC19 Rabbit Polyclonal Antibody

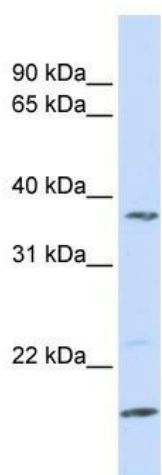
Product data:

Product Type:	Primary Antibodies
Applications:	WB
Recommended Dilution:	WB
Reactivity:	Human
Host:	Rabbit
Isotype:	IgG
Clonality:	Polyclonal
Immunogen:	The immunogen for Anti-ZDHHC19 Antibody: synthetic peptide directed towards the N terminal of human ZDHHC19. Synthetic peptide located within the following region: TLLTDATPLVKEPHPLPLVPRPWFLPSLFAAFNVLLVFFSGLFFAFPCR
Formulation:	Liquid. Purified antibody supplied in 1x PBS buffer with 0.09% (w/v) sodium azide and 2% sucrose.
Purification:	Affinity Purified
Conjugation:	Unconjugated
Storage:	Store at -20°C as received.
Stability:	Stable for 12 months from date of receipt.
Predicted Protein Size:	34 kDa
Gene Name:	zinc finger DHHC-type containing 19
Database Link:	NP_001034706 Entrez Gene 131540 Human Q8WVZ1
Background:	ZDHHC19 belongs to the DHHC palmitoyltransferase family. It contains 1 DHHC-type zinc finger. ZDHHC19 is a multi-pass membrane protein. The function of the ZDHHC19 protein is not known.
Synonyms:	DHHC19
Note:	Immunogen Sequence Homology: Human: 100%; Pig: 77%
Protein Families:	Transmembrane



[View online »](#)

Product images:



WB Suggested Anti-ZDHHC19 Antibody Titration:
0.2-1 ug/ml; ELISA Titer: 1: 312500; Positive
Control: MCF7 cell lysate