

Product datasheet for **TA335985**

CHIC1 Rabbit Polyclonal Antibody

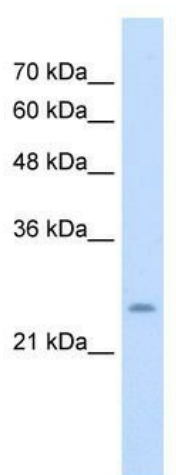
Product data:

Product Type:	Primary Antibodies
Applications:	WB
Recommended Dilution:	WB
Reactivity:	Human
Host:	Rabbit
Isotype:	IgG
Clonality:	Polyclonal
Immunogen:	The immunogen for Anti-CHIC1 Antibody: synthetic peptide directed towards the N terminal of human CHIC1. Synthetic peptide located within the following region: LRRYADPVLVRGAGHITVFGLSNKFDFEFPVLTGKVAPEEFKTSIGRV
Formulation:	Liquid. Purified antibody supplied in 1x PBS buffer with 0.09% (w/v) sodium azide and 2% sucrose. <i>Note that this product is shipped as lyophilized powder to China customers.</i>
Purification:	Protein A purified
Conjugation:	Unconjugated
Storage:	Store at -20°C as received.
Stability:	Stable for 12 months from date of receipt.
Predicted Protein Size:	24 kDa
Gene Name:	cysteine rich hydrophobic domain 1
Database Link:	NP_001034929 Entrez Gene 53344 Human Q5VXU3
Background:	The function remains unknown.
Synonyms:	BRX
Note:	Immunogen Sequence Homology: Dog: 100%; Pig: 100%; Rat: 100%; Horse: 100%; Human: 100%; Mouse: 100%; Bovine: 100%; Rabbit: 100%; Zebrafish: 100%; Guinea pig: 100%
Protein Families:	Transmembrane



[View online »](#)

Product images:



WB Suggested Anti-CHIC1 Antibody Titration: 5.0 ug/ml; Positive Control: Jurkat cell lysate