

## Product datasheet for **TA335984**

### ACBD7 Rabbit Polyclonal Antibody

#### Product data:

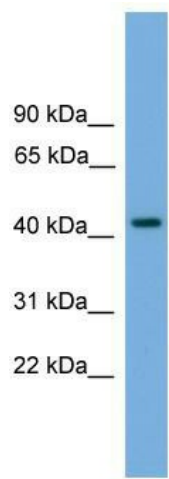
Product Type:	Primary Antibodies
Applications:	WB
Recommended Dilution:	WB
Reactivity:	Human
Host:	Rabbit
Isotype:	IgG
Clonality:	Polyclonal
Immunogen:	The immunogen for Anti-PALM Antibody: synthetic peptide directed towards the N terminal of human PALM. Synthetic peptide located within the following region: LEDERRQLQHLKSKALRERWLLEGTPSSASEGDEDLRRQMQDDEQKTRLL
Formulation:	Liquid. Purified antibody supplied in 1x PBS buffer with 0.09% (w/v) sodium azide and 2% sucrose. <i>Note that this product is shipped as lyophilized powder to China customers.</i>
Purification:	Affinity Purified
Conjugation:	Unconjugated
Storage:	Store at -20°C as received.
Stability:	Stable for 12 months from date of receipt.
Predicted Protein Size:	37 kDa
Gene Name:	acyl-CoA binding domain containing 7
Database Link:	<a href="#">NP_001034933</a> <a href="#">Entrez Gene 414149 Human</a> <a href="#">Q8N6N7</a>
Background:	This gene encodes a member of the paralemmin protein family. The product of this gene is a prenylated and palmitoylated phosphoprotein that associates with the cytoplasmic face of plasma membranes and is implicated in plasma membrane dynamics in neurons and other cell types. Several alternatively spliced transcript variants have been identified, but the full-length nature of only two transcript variants has been determined.
Synonyms:	bA455B2.2



[View online »](#)

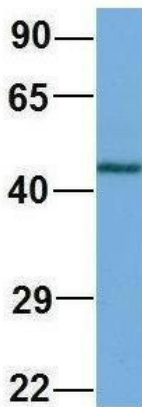
**Note:** Immunogen Sequence Homology: Human: 100%; Rat: 93%; Bovine: 93%; Pig: 86%; Mouse: 86%; Dog: 79%; Rabbit: 79%

**Product images:**



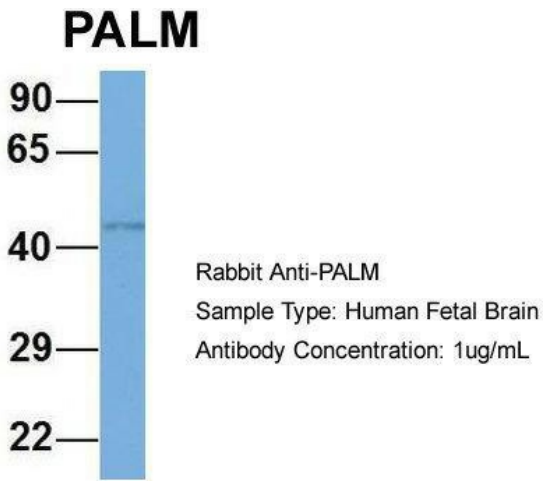
WB Suggested Anti-PALM Antibody Titration: 0.2-1 ug/ml; ELISA Titer: 1:1562500; Positive Control: MCF7 cell lysate

**PALM**



Rabbit Anti-PALM  
 Sample Type: Human Fetal Lung  
 Antibody Concentration: 1ug/mL

Host: Rabbit; Target Name: PALM; Sample Tissue: Human Fetal Lung; Antibody Dilution: 1.0 ug/ml



Host: Rabbit; Target Name: PALM; Sample Tissue: Human Fetal Brain; Antibody Dilution: 1.0 ug/ml