

## Product datasheet for **TA335982**

### **C19orf46 (SYNE4) Rabbit Polyclonal Antibody**

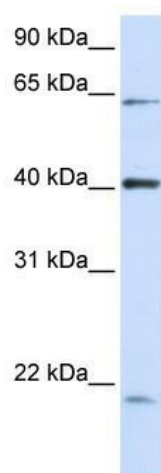
#### **Product data:**

Product Type:	Primary Antibodies
Applications:	WB
Recommended Dilution:	WB
Reactivity:	Human
Host:	Rabbit
Isotype:	IgG
Clonality:	Polyclonal
Immunogen:	The immunogen for Anti-C19orf46 Antibody: synthetic peptide directed towards the N terminal of human C19orf46. Synthetic peptide located within the following region: GEESTSPEQAQTLGQDSLGPPEHFQGGPRGNPEAAHPPRWSTPSSYEDPA
Formulation:	Liquid. Purified antibody supplied in 1x PBS buffer with 0.09% (w/v) sodium azide and 2% sucrose. <i>Note that this product is shipped as lyophilized powder to China customers.</i>
Purification:	Affinity Purified
Conjugation:	Unconjugated
Storage:	Store at -20°C as received.
Stability:	Stable for 12 months from date of receipt.
Predicted Protein Size:	43 kDa
Gene Name:	spectrin repeat containing nuclear envelope family member 4
Database Link:	<a href="#">NP_001034965</a> <a href="#">Entrez Gene 163183 Human</a> <a href="#">Q8N205</a>
Background:	The exact function of C19orf46 remains unknown.
Synonyms:	C19orf46; DFNB76; Nesp4
Note:	Immunogen Sequence Homology: Human: 100%; Horse: 85%; Bovine: 85%
Protein Families:	Transmembrane



[View online »](#)

## Product images:



WB Suggested Anti-C19orf46 Antibody Titration:  
0.2-1 ug/ml; ELISA Titer: 1: 1562500; Positive  
Control: 293T cell lysate