

## Product datasheet for **TA335981**

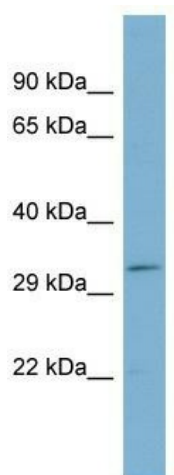
### **C19orf46 (SYNE4) Rabbit Polyclonal Antibody**

#### **Product data:**

<b>Product Type:</b>	Primary Antibodies
<b>Applications:</b>	WB
<b>Recommended Dilution:</b>	WB
<b>Reactivity:</b>	Human
<b>Host:</b>	Rabbit
<b>Isotype:</b>	IgG
<b>Clonality:</b>	Polyclonal
<b>Immunogen:</b>	The immunogen for Anti-SYNE4 Antibody is: synthetic peptide directed towards the N-terminal region of Human SYNE4. Synthetic peptide located within the following region: PLGPRLGSEPLNHPPGAPREADIVGCTVCPASGEESTSPEQAQTLGQDSL
<b>Formulation:</b>	Liquid. Purified antibody supplied in 1x PBS buffer with 0.09% (w/v) sodium azide and 2% sucrose. <i>Note that this product is shipped as lyophilized powder to China customers.</i>
<b>Purification:</b>	Affinity Purified
<b>Conjugation:</b>	Unconjugated
<b>Storage:</b>	Store at -20°C as received.
<b>Stability:</b>	Stable for 12 months from date of receipt.
<b>Predicted Protein Size:</b>	32 kDa
<b>Gene Name:</b>	spectrin repeat containing nuclear envelope family member 4
<b>Database Link:</b>	<a href="#">NP_001034965</a> <a href="#">Entrez Gene 163183 Human</a> <a href="#">Q8N205</a>
<b>Background:</b>	The exact function of C19orf46 remains unknown.
<b>Synonyms:</b>	C19orf46; DFNB76; Nesp4
<b>Note:</b>	Immunogen Sequence Homology: Horse: 100%; Human: 100%; Dog: 92%; Pig: 85%; Rat: 85%; Guinea pig: 85%
<b>Protein Families:</b>	Transmembrane



[View online »](#)

**Product images:**

Host: Rabbit; Target Name: SYNE4; Sample  
Tissue: ACHN Whole Cell lysates; Antibody  
Dilution: 1.0 ug/ml