

Product datasheet for **TA335978**

I Afadin (AFDN) Rabbit Polyclonal Antibody

Product data:

Product Type:	Primary Antibodies
Applications:	WB
Recommended Dilution:	WB
Reactivity:	Human
Host:	Rabbit
Isotype:	IgG
Clonality:	Polyclonal
Immunogen:	The immunogen for Anti-MLLT4 Antibody: synthetic peptide directed towards the N terminal of human MLLT4. Synthetic peptide located within the following region: GVIQNFKRTLKKEKKEKKREKEALRQASDKDDRPFQGEDVENSRLAAE
Formulation:	Liquid. Purified antibody supplied in 1x PBS buffer with 0.09% (w/v) sodium azide and 2% sucrose. <i>Note that this product is shipped as lyophilized powder to China customers.</i>
Purification:	Protein A purified
Conjugation:	Unconjugated
Storage:	Store at -20°C as received.
Stability:	Stable for 12 months from date of receipt.
Predicted Protein Size:	74 kDa
Gene Name:	myeloid/lymphoid or mixed-lineage leukemia; translocated to, 4
Database Link:	NP_001035089 Entrez Gene 4301 Human P55196
Background:	AF6 is a Ras target that regulates cell-cell adhesions downstream of Ras activation. It is fused with MLL in leukemias caused by t(6;11) translocations.
Synonyms:	AF6
Note:	Immunogen Sequence Homology: Dog: 100%; Rat: 100%; Human: 100%; Bovine: 100%; Pig: 93%; Horse: 93%; Mouse: 93%; Yeast: 92%; Guinea pig: 92%; Zebrafish: 91%; Rabbit: 85%

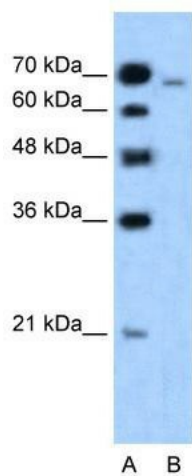


[View online »](#)

Protein Families: Druggable Genome

Protein Pathways: Adherens junction, Leukocyte transendothelial migration, Tight junction

Product images:



WB Suggested Anti-MLLT4 Antibody Titration:
1.25 ug/ml; ELISA Titer: 1:312500; Positive
Control: HepG2 cell lysate; MLLT4 is strongly
supported by BioGPS gene expression data to be
expressed in Human HepG2 cells