

## Product datasheet for **TA335977**

### FAM3C Rabbit Polyclonal Antibody

#### Product data:

Product Type:	Primary Antibodies
Applications:	WB
Recommended Dilution:	WB
Reactivity:	Human
Host:	Rabbit
Isotype:	IgG
Clonality:	Polyclonal
Immunogen:	The immunogen for Anti-FAM3C Antibody: synthetic peptide directed towards the C terminal of human FAM3C. Synthetic peptide located within the following region: DNWVFCGGKGIKTKSPFEQHIKNNKDTNKYEGWPEVWEMEGCIPQKQD
Formulation:	Liquid. Purified antibody supplied in 1x PBS buffer with 0.09% (w/v) sodium azide and 2% sucrose. <i>Note that this product is shipped as lyophilized powder to China customers.</i>
Purification:	Affinity Purified
Conjugation:	Unconjugated
Storage:	Store at -20°C as received.
Stability:	Stable for 12 months from date of receipt.
Predicted Protein Size:	22 kDa
Gene Name:	family with sequence similarity 3 member C
Database Link:	<a href="#">NP_001035109</a> <a href="#">Entrez Gene 10447 Human Q92520</a>
Background:	FAM3C is a secreted protein with a GG domain. A change in expression of this protein has been noted in pancreatic cancer-derived cells. This gene is a member of the family with sequence similarity 3 (FAM3) family and encodes a secreted protein with a GG domain. A change in expression of this protein has been noted in pancreatic cancer-derived cells. Alternate transcriptional splice variants which encode the same protein have been characterized.



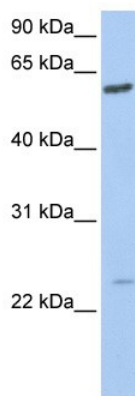
[View online »](#)

**Synonyms:** GS3786; ILEI

**Note:** Immunogen Sequence Homology: Dog: 100%; Pig: 100%; Rat: 100%; Human: 100%; Bovine: 100%; Guinea pig: 100%; Horse: 93%; Mouse: 93%; Rabbit: 91%; Zebrafish: 86%

**Protein Families:** Secreted Protein, Transmembrane

**Product images:**



WB Suggested Anti-FAM3C Antibody Titration:  
0.2-1ug/ml; Positive Control: 721\_B cell lysate