

## Product datasheet for **TA335975**

### ENPP2 Rabbit Polyclonal Antibody

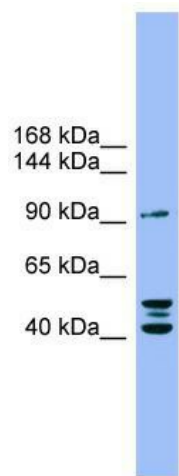
#### Product data:

Product Type:	Primary Antibodies
Applications:	WB
Recommended Dilution:	WB
Reactivity:	Human
Host:	Rabbit
Isotype:	IgG
Clonality:	Polyclonal
Immunogen:	The immunogen for Anti-ENPP2 Antibody: synthetic peptide directed towards the N terminal of human ENPP2. Synthetic peptide located within the following region: YTLATGLYPESHGIVGNSMYDPVFDATFHLRGREKFNHRWWGGQPLWITA
Formulation:	Liquid. Purified antibody supplied in 1x PBS buffer with 0.09% (w/v) sodium azide and 2% sucrose. <i>Note that this product is shipped as lyophilized powder to China customers.</i>
Purification:	Affinity Purified
Conjugation:	Unconjugated
Storage:	Store at -20°C as received.
Stability:	Stable for 12 months from date of receipt.
Predicted Protein Size:	95 kDa
Gene Name:	ectonucleotide pyrophosphatase/phosphodiesterase 2
Database Link:	<a href="#">NP_001035181</a> <a href="#">Entrez Gene 5168 Human</a> <a href="#">Q13822</a>



[View online »](#)

- Background:** The protein encoded by this gene functions as both a phosphodiesterase, which cleaves phosphodiester bonds at the 5' end of oligonucleotides, and a phospholipase, which catalyzes production of lysophosphatidic acid (LPA) in extracellular fluids. LPA evokes growth factor-like responses including stimulation of cell proliferation and chemotaxis. This gene product stimulates the motility of tumor cells and has angiogenic properties, and its expression is upregulated in several kinds of carcinomas. The gene product is secreted and further processed to make the biologically active form. Several alternatively spliced transcript variants encoding different isoforms have been identified.
- Synonyms:** ATX; ATX-X; AUTOTAXIN; LysoPLD; NPP2; PD-IALPHA; PDNP2
- Note:** Immunogen Sequence Homology: Dog: 100%; Pig: 100%; Rat: 100%; Horse: 100%; Human: 100%; Mouse: 100%; Rabbit: 100%; Guinea pig: 100%; Bovine: 86%
- Protein Families:** Druggable Genome, Transcription Factors, Transmembrane
- Protein Pathways:** Ether lipid metabolism
- Product images:**



WB Suggested Anti-ENPP2 Antibody Titration: 0.2-1 ug/ml; ELISA Titer: 1: 1562500; Positive Control: COLO205 cell lysate