

## Product datasheet for TA335972

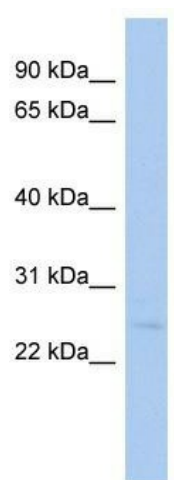
### SLC66A1 Rabbit Polyclonal Antibody

#### Product data:

Product Type:	Primary Antibodies
Applications:	WB
Recommended Dilution:	WB
Reactivity:	Human
Host:	Rabbit
Isotype:	IgG
Clonality:	Polyclonal
Immunogen:	The immunogen for Anti-PQLC2 Antibody: synthetic peptide directed towards the middle region of human PQLC2. Synthetic peptide located within the following region: LLFLMGMACATPLLSAAGPVAAPREAFRGRALLSVESGSKPFTRQEVIGF
Formulation:	Liquid. Purified antibody supplied in 1x PBS buffer with 0.09% (w/v) sodium azide and 2% sucrose.
Purification:	Affinity Purified
Conjugation:	Unconjugated
Storage:	Store at -20°C as received.
Stability:	Stable for 12 months from date of receipt.
Predicted Protein Size:	25 kDa
Gene Name:	PQ loop repeat containing 2
Database Link:	<a href="#">NP_001035215</a> <a href="#">Entrez Gene 54896 Human</a> <a href="#">Q6ZP29</a>
Background:	The specific function of this protein remains unknown.
Synonyms:	RP4-657E11.5
Note:	Immunogen Sequence Homology: Human: 100%; Pig: 86%; Dog: 79%; Horse: 79%; Guinea pig: 79%
Protein Families:	Transmembrane


[View online »](#)

## Product images:



WB Suggested Anti-PQLC2 Antibody Titration: 0.2-1 ug/ml; ELISA Titer: 1: 1562500; Positive Control: THP-1 cell lysate