

Product datasheet for **TA335970**

SPOCK3 Rabbit Polyclonal Antibody

Product data:

Product Type:	Primary Antibodies
Applications:	WB
Recommended Dilution:	WB
Reactivity:	Human
Host:	Rabbit
Isotype:	IgG
Clonality:	Polyclonal
Immunogen:	The immunogen for Anti-SPOCK3 Antibody: synthetic peptide directed towards the middle region of human SPOCK3. Synthetic peptide located within the following region: CPCPSDKPTSTSRNVKRACSDLEFREVANLRDWFKALHESGSQNKTKT
Formulation:	Liquid. Purified antibody supplied in 1x PBS buffer with 0.09% (w/v) sodium azide and 2% sucrose. <i>Note that this product is shipped as lyophilized powder to China customers.</i>
Purification:	Affinity Purified
Conjugation:	Unconjugated
Storage:	Store at -20°C as received.
Stability:	Stable for 12 months from date of receipt.
Predicted Protein Size:	49 kDa
Gene Name:	sparc/osteonectin, cwcv and kazal-like domains proteoglycan (testican) 3
Database Link:	NP_001035249 Entrez Gene 50859 Human Q9BQ16
Background:	Proteoglycans, which consist of a core protein and covalently linked glycosaminoglycans, are components of the extracellular matrix. SPOCK3 is a member of a novel Ca(2+)-binding proteoglycan family. Proteoglycans, which consist of a core protein and covalently linked glycosaminoglycans, are components of the extracellular matrix. SPOCK3 encodes a member of a novel Ca(2+)-binding proteoglycan family. [supplied by OMIM]
Synonyms:	HSAJ1454; TES-3; TICN3

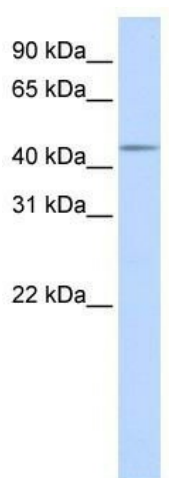


[View online »](#)

Note: Immunogen Sequence Homology: Dog: 100%; Pig: 100%; Rat: 100%; Human: 100%; Mouse: 100%; Guinea pig: 100%; Rabbit: 93%

Protein Families: Secreted Protein, Transmembrane

Product images:



WB Suggested Anti-SPOCK3 Antibody Titration:
0.2-1 ug/ml; ELISA Titer: 1: 62500; Positive
Control: Human Placenta