

Product datasheet for **TA335969**

Lunatic Fringe (LFNG) Rabbit Polyclonal Antibody

Product data:

Product Type:	Primary Antibodies
Applications:	WB
Recommended Dilution:	WB
Reactivity:	Human
Host:	Rabbit
Isotype:	IgG
Clonality:	Polyclonal
Immunogen:	The immunogen for Anti-LFNG Antibody: synthetic peptide directed towards the N terminal of human LFNG. Synthetic peptide located within the following region: LSEYFSLLRARRDAGPPPGAAPRPADGHRPLAEPLAPRDVFIKTKTK
Formulation:	Liquid. Purified antibody supplied in 1x PBS buffer with 0.09% (w/v) sodium azide and 2% sucrose. <i>Note that this product is shipped as lyophilized powder to China customers.</i>
Purification:	Affinity Purified
Conjugation:	Unconjugated
Storage:	Store at -20°C as received.
Stability:	Stable for 12 months from date of receipt.
Predicted Protein Size:	39 kDa
Gene Name:	LFNG O-fucosylpeptide 3-beta-N-acetylglucosaminyltransferase
Database Link:	NP_001035258 Entrez Gene 3955 Human Q8NES3



[View online »](#)

Background:

LFNG is a member of the glycosyltransferase superfamily. It is a single-pass type II Golgi membrane protein that functions as a fucose-specific glycosyltransferase, adding an N-acetylglucosamine to the fucose residue of a group of signaling receptors involved in regulating cell fate decisions during development. Mutations in the gene that encodes this protein have been associated with autosomal recessive spondylocostal dysostosis 3. This gene encodes a member of the glycosyltransferase superfamily. The encoded protein is a single-pass type II Golgi membrane protein that functions as a fucose-specific glycosyltransferase, adding an N-acetylglucosamine to the fucose residue of a group of signaling receptors involved in regulating cell fate decisions during development. Mutations in this gene have been associated with autosomal recessive spondylocostal dysostosis 3. Alternatively spliced transcript variants that encode different isoforms have been described, however, not all variants have been fully characterized.

Synonyms:

SCDO3

Note:

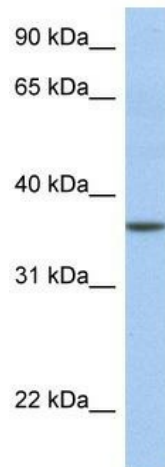
Immunogen Sequence Homology: Pig: 100%; Rat: 100%; Horse: 100%; Human: 100%; Mouse: 100%; Yeast: 100%; Guinea pig: 100%; Bovine: 93%

Protein Families:

Transmembrane

Protein Pathways:

Notch signaling pathway

Product images:

WB Suggested Anti-LFNG Antibody Titration: 0.2-1 ug/ml; Positive Control: Human Muscle