

Product datasheet for **TA335968**

CLDND1 Rabbit Polyclonal Antibody

Product data:

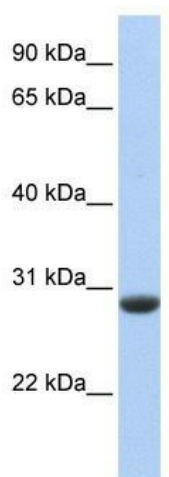
Product Type:	Primary Antibodies
Applications:	WB
Recommended Dilution:	WB
Reactivity:	Human
Host:	Rabbit
Isotype:	IgG
Clonality:	Polyclonal
Immunogen:	The immunogen for Anti-CLDND1 Antibody: synthetic peptide directed towards the middle region of human CLDND1. Synthetic peptide located within the following region: TLTEQFMEKFVDPGNHNSGIDLLRXYLWRCQFLLPFVSLGLMCFGALIGL
Formulation:	Liquid. Purified antibody supplied in 1x PBS buffer with 0.09% (w/v) sodium azide and 2% sucrose. <i>Note that this product is shipped as lyophilized powder to China customers.</i>
Purification:	Affinity Purified
Conjugation:	Unconjugated
Storage:	Store at -20°C as received.
Stability:	Stable for 12 months from date of receipt.
Predicted Protein Size:	28 kDa
Gene Name:	claudin domain containing 1
Database Link:	NP_001035271 Entrez Gene 56650 Human Q9NY35
Background:	CLDND1 belongs to the PMP-22/EMP/MP20 family. It is a multi-pass membrane protein. The exact function of CLDND1 remains unknown.
Synonyms:	C3orf4; GENX-3745
Note:	Immunogen Sequence Homology: Dog: 100%; Pig: 100%; Rat: 100%; Horse: 100%; Human: 100%; Mouse: 100%; Rabbit: 100%; Bovine: 93%; Guinea pig: 93%



[View online »](#)

Protein Families: Transmembrane

Product images:



WB Suggested Anti-CLDND1 Antibody Titration:
0.2-1 ug/ml; Positive Control: Human Muscle