

Product datasheet for **TA335967**

MINDY1 Rabbit Polyclonal Antibody

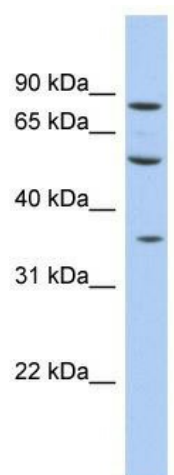
Product data:

Product Type:	Primary Antibodies
Applications:	WB
Recommended Dilution:	WB
Reactivity:	Human
Host:	Rabbit
Isotype:	IgG
Clonality:	Polyclonal
Immunogen:	The immunogen for Anti-FAM63A Antibody: synthetic peptide directed towards the middle region of human FAM63A. Synthetic peptide located within the following region: LQQEEYQQQAAQPVRMRTRVLSLQGRGATSGRPAGERRQRPKHESDCIL
Formulation:	Liquid. Purified antibody supplied in 1x PBS buffer with 0.09% (w/v) sodium azide and 2% sucrose. <i>Note that this product is shipped as lyophilized powder to China customers.</i>
Purification:	Affinity Purified
Conjugation:	Unconjugated
Storage:	Store at -20°C as received.
Stability:	Stable for 12 months from date of receipt.
Predicted Protein Size:	36 kDa
Gene Name:	family with sequence similarity 63 member A
Database Link:	NP_001035307 Entrez Gene 55793 Human Q8N5J2
Background:	The specific function of this protein remains unknown.
Synonyms:	RP11-316M1.5
Note:	Immunogen Sequence Homology: Pig: 100%; Rat: 100%; Human: 100%; Mouse: 100%; Guinea pig: 100%; Horse: 92%; Rabbit: 92%; Dog: 85%; Bovine: 85%



[View online »](#)

Product images:



WB Suggested Anti-FAM63A Antibody Titration:
0.2-1 ug/ml; ELISA Titer: 1:1562500; Positive
Control: Human Liver