

Product datasheet for **TA335965**

MTMR12 Rabbit Polyclonal Antibody

Product data:

Product Type:	Primary Antibodies
Applications:	WB
Recommended Dilution:	WB
Reactivity:	Human
Host:	Rabbit
Isotype:	IgG
Clonality:	Polyclonal
Immunogen:	The immunogen for Anti-MTMR12 Antibody: synthetic peptide directed towards the middle region of human MTMR12. Synthetic peptide located within the following region: RNSARLSSLFPFALLQRHSSKPVLPTSGWKALGDEDDLAKREDEFVDLGD
Formulation:	Liquid. Purified antibody supplied in 1x PBS buffer with 0.09% (w/v) sodium azide and 2% sucrose.
Purification:	Affinity Purified
Conjugation:	Unconjugated
Storage:	Store at -20°C as received.
Stability:	Stable for 12 months from date of receipt.
Predicted Protein Size:	86 kDa
Gene Name:	myotubularin related protein 12
Database Link:	NP_001035536 Entrez Gene 54545 Human Q9C0I1
Background:	MTMR12 inactivates phosphatase that plays a role as an adapter for the phosphatase myotubularin to regulate myotubularin intracellular location. Phosphatidylinositol 3-kinase-derived membrane-anchored phosphatidylinositides, such as phosphatidylinositol 3-phosphate (PtdIns(3)P), regulate diverse cellular processes. The protein encoded by this gene functions as an adaptor subunit in a complex with an active PtdIns(3)P 3-phosphatase. Alternatively spliced transcript variants have been identified, but their biological validity has not been determined.



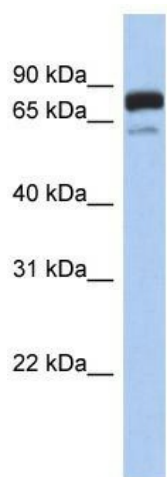
[View online »](#)

Synonyms: 3-PAP; PIP3AP

Note: Immunogen Sequence Homology: Dog: 100%; Rat: 100%; Human: 100%; Mouse: 100%; Bovine: 100%; Pig: 93%; Rabbit: 93%; Guinea pig: 93%; Horse: 86%

Protein Families: Druggable Genome

Product images:



WB Suggested Anti-MTMR12 Antibody Titration:
0.2-1 ug/ml; ELISA Titer: 1:1562500; Positive
Control: Human brain