

## Product datasheet for **TA335963**

### SI Rabbit Polyclonal Antibody

#### Product data:

Product Type:	Primary Antibodies
Applications:	WB
Recommended Dilution:	WB
Reactivity:	Human
Host:	Rabbit
Isotype:	IgG
Clonality:	Polyclonal
Immunogen:	The immunogen for Anti-SI Antibody: synthetic peptide directed towards the middle region of human SI. Synthetic peptide located within the following region: LPCQEPAQNTFYSRQKHMKLIVAADDNQMAQGSFLWDDGESIDTYERDLY
Formulation:	Liquid. Purified antibody supplied in 1x PBS buffer with 0.09% (w/v) sodium azide and 2% sucrose. <i>Note that this product is shipped as lyophilized powder to China customers.</i>
Purification:	Affinity Purified
Conjugation:	Unconjugated
Storage:	Store at -20°C as received.
Stability:	Stable for 12 months from date of receipt.
Predicted Protein Size:	209 kDa
Gene Name:	sucrase-isomaltase
Database Link:	<a href="#">NP_001032</a> <a href="#">Entrez Gene 6476 Human P14410</a>
Background:	SI belongs to the glycosyl hydrolase 31 family. It plays an important role in the final stage of carbohydrate digestion.
Synonyms:	MGC131621; MGC131622
Note:	Immunogen Sequence Homology: Human: 100%; Pig: 93%; Bovine: 93%; Dog: 90%; Rat: 90%; Guinea pig: 90%; Rabbit: 86%; Zebrafish: 82%; Horse: 79%; Mouse: 79%

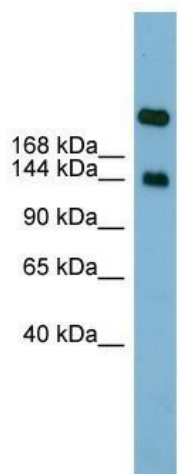


[View online »](#)

Protein Families: Druggable Genome, Transmembrane

Protein Pathways: Metabolic pathways, Starch and sucrose metabolism

### Product images:



WB Suggested Anti-SI Antibody Titration: 0.2-1 ug/ml; ELISA Titer: 1: 312500; Positive Control: Human Small Intestine