

## Product datasheet for **TA335961**

### RALGDS Rabbit Polyclonal Antibody

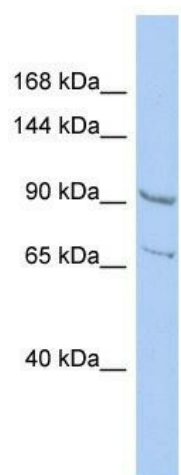
#### Product data:

Product Type:	Primary Antibodies
Applications:	WB
Recommended Dilution:	WB
Reactivity:	Human
Host:	Rabbit
Isotype:	IgG
Clonality:	Polyclonal
Immunogen:	The immunogen for Anti-RALGDS Antibody: synthetic peptide directed towards the N terminal of human RALGDS. Synthetic peptide located within the following region: KRYGRCDALTASSRYGCILPYSDEDGGPQDQLKNAISSILGTWLDQYSED
Formulation:	Liquid. Purified antibody supplied in 1x PBS buffer with 0.09% (w/v) sodium azide and 2% sucrose. <i>Note that this product is shipped as lyophilized powder to China customers.</i>
Purification:	Affinity Purified
Conjugation:	Unconjugated
Storage:	Store at -20°C as received.
Stability:	Stable for 12 months from date of receipt.
Predicted Protein Size:	95 kDa
Gene Name:	ral guanine nucleotide dissociation stimulator
Database Link:	<a href="#">NP_001035827</a> <a href="#">Entrez Gene 5900 Human Q12967</a>
Background:	The specific function of this protein remains unknown.
Synonyms:	RalGEF; RGDS; RGF
Note:	Immunogen Sequence Homology: Dog: 100%; Human: 100%; Rat: 93%; Mouse: 93%; Bovine: 93%; Pig: 86%; Guinea pig: 86%
Protein Pathways:	Colorectal cancer, Pancreatic cancer, Pathways in cancer



[View online »](#)

## Product images:



WB Suggested Anti-RALGDS Antibody Titration:  
0.2-1 ug/ml; ELISA Titer: 1:312500; Positive  
Control: HepG2 cell lysate