

## Product datasheet for **TA335960**

### PTPN20B (PTPN20) Rabbit Polyclonal Antibody

#### Product data:

Product Type:	Primary Antibodies
Applications:	WB
Recommended Dilution:	WB
Reactivity:	Human
Host:	Rabbit
Isotype:	IgG
Clonality:	Polyclonal
Immunogen:	The immunogen for Anti-PTPN20A Antibody is: synthetic peptide directed towards the middle region of Human PTPN20A. Synthetic peptide located within the following region: LEEKTAAYDIMQEFMALELKNLPGEFNSGNQPSNREKNRYRDILPYDSTR
Formulation:	Liquid. Purified antibody supplied in 1x PBS buffer with 0.09% (w/v) sodium azide and 2% sucrose. <i>Note that this product is shipped as lyophilized powder to China customers.</i>
Purification:	Affinity Purified
Conjugation:	Unconjugated
Storage:	Store at -20°C as received.
Stability:	Stable for 12 months from date of receipt.
Predicted Protein Size:	37 kDa
Gene Name:	protein tyrosine phosphatase, non-receptor type 20
Database Link:	<a href="#">NP_001035854</a> <a href="#">Entrez Gene 653129</a> <a href="#">Entrez Gene 26095 Human</a> <a href="#">Q4JDL3</a>



[View online »](#)

**Background:**

The product of this gene belongs to the family of classical tyrosine-specific protein tyrosine phosphatases. Many protein tyrosine phosphatases have been shown to regulate fundamental cellular processes and several are mutated in human diseases. Chromosome 10q contains a segmental duplication resulting in multiple copies of the protein tyrosine phosphatase, non-receptor type 20 gene. The two nearly identical copies are designated as PTPN20A and PTPN20B. A third copy is only partially duplicated and contains a pseudogene, designated as PTPN20C. This gene encodes the more centromeric copy, PTPN20A. Multiple alternatively spliced transcript variants encoding different isoforms have been identified.

**Synonyms:**

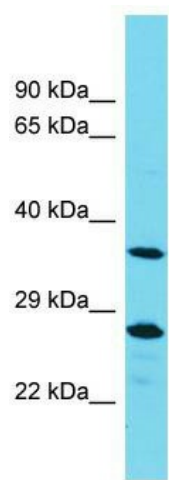
bA142I17.1; CT126; hPTPN20; PTPN20B

**Note:**

Immunogen Sequence Homology: Human: 100%; Pig: 79%; Zebrafish: 77%

**Protein Families:**

Druggable Genome

**Product images:**

Host: Rabbit; Target Name: PTPN20A; Sample  
Tissue: MCF7 Whole Cell lysates; Antibody  
Dilution: 1.0 ug/ml