

Product datasheet for **TA335959**

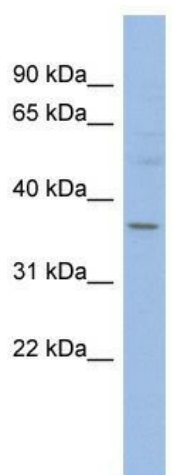
HMGCLL1 Rabbit Polyclonal Antibody

Product data:

Product Type:	Primary Antibodies
Applications:	WB
Recommended Dilution:	WB
Reactivity:	Human
Host:	Rabbit
Isotype:	IgG
Clonality:	Polyclonal
Immunogen:	The immunogen for Anti-HMGCLL1 Antibody: synthetic peptide directed towards the N terminal of human HMGCLL1. Synthetic peptide located within the following region: MGNVPSAVKHCLSYQQLREHLWIGDSVAGALDPAQETSQLSGLPEFVKI
Formulation:	Liquid. Purified antibody supplied in 1x PBS buffer with 0.09% (w/v) sodium azide and 2% sucrose. <i>Note that this product is shipped as lyophilized powder to China customers.</i>
Purification:	Affinity Purified
Conjugation:	Unconjugated
Storage:	Store at -20°C as received.
Stability:	Stable for 12 months from date of receipt.
Predicted Protein Size:	36 kDa
Gene Name:	3-hydroxymethyl-3-methylglutaryl-CoA lyase-like 1
Database Link:	NP_001035865 Entrez Gene 54511 Human Q8TB92
Background:	HMGCLL1 is involved in the catabolism of branched amino acids such as leucine.
Synonyms:	bA418P12.1; er-cHL
Note:	Immunogen Sequence Homology: Horse: 100%; Human: 100%; Rabbit: 100%; Rat: 92%; Mouse: 92%; Bovine: 92%



[View online »](#)

Product images:

WB Suggested Anti-HMGCLL1 Antibody Titration:
0.2-1 ug/ml; ELISA Titer: 1:1562500; Positive
Control: OVCAR-3 cell lysate