

## Product datasheet for **TA335954**

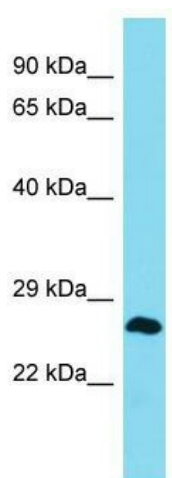
### **C6orf124 (AFDN-AS1) Rabbit Polyclonal Antibody**

#### **Product data:**

Product Type:	Primary Antibodies
Applications:	WB
Recommended Dilution:	WB
Reactivity:	Human
Host:	Rabbit
Isotype:	IgG
Clonality:	Polyclonal
Immunogen:	The immunogen for Anti-MLLT4-AS1 Antibody is: synthetic peptide directed towards the middle region of Human MLLT4-AS1. Synthetic peptide located within the following region: WTGGAGSKWGC SAGS GRAVLGPNGRWVPWAVLGSVRTGGAGSKWAALGPM
Formulation:	Liquid. Purified antibody supplied in 1x PBS buffer with 0.09% (w/v) sodium azide and 2% sucrose. <i>Note that this product is shipped as lyophilized powder to China customers.</i>
Purification:	Affinity Purified
Conjugation:	Unconjugated
Storage:	Store at -20°C as received.
Stability:	Stable for 12 months from date of receipt.
Predicted Protein Size:	25 kDa
Gene Name:	MLLT4 antisense RNA 1 (head to head)
Database Link:	<a href="#">NP_001035973</a> <a href="#">Entrez Gene 653483 Human</a>
Background:	The function of this protein remains unknown.
Synonyms:	dj431P23.3; HGC6.4
Note:	Immunogen Sequence Homology: Human: 100%



[View online »](#)

**Product images:**

Host: Rabbit; Target Name: MLLT4-AS1; Sample  
Tissue: Jurkat Whole Cell lysates; Antibody  
Dilution: 1.0 ug/ml