

## Product datasheet for **TA335953**

### CHD2 Rabbit Polyclonal Antibody

#### Product data:

Product Type:	Primary Antibodies
Applications:	WB
Recommended Dilution:	WB
Reactivity:	Human
Host:	Rabbit
Isotype:	IgG
Clonality:	Polyclonal
Immunogen:	The immunogen for Anti-CHD2 Antibody: synthetic peptide directed towards the N terminal of human CHD2. Synthetic peptide located within the following region: QSESEQSDP GSGHGSESNSSSESESQSESESESAGSKSQPVLPEAKEK
Formulation:	Liquid. Purified antibody supplied in 1x PBS buffer with 0.09% (w/v) sodium azide and 2% sucrose. <i>Note that this product is shipped as lyophilized powder to China customers.</i>
Purification:	Affinity Purified
Conjugation:	Unconjugated
Storage:	Store at -20°C as received.
Stability:	Stable for 12 months from date of receipt.
Predicted Protein Size:	57 kDa
Gene Name:	chromodomain helicase DNA binding protein 2
Database Link:	<a href="#">NP_001036037</a> <a href="#">Entrez Gene 1106 Human</a> <a href="#">O14647</a>



[View online »](#)

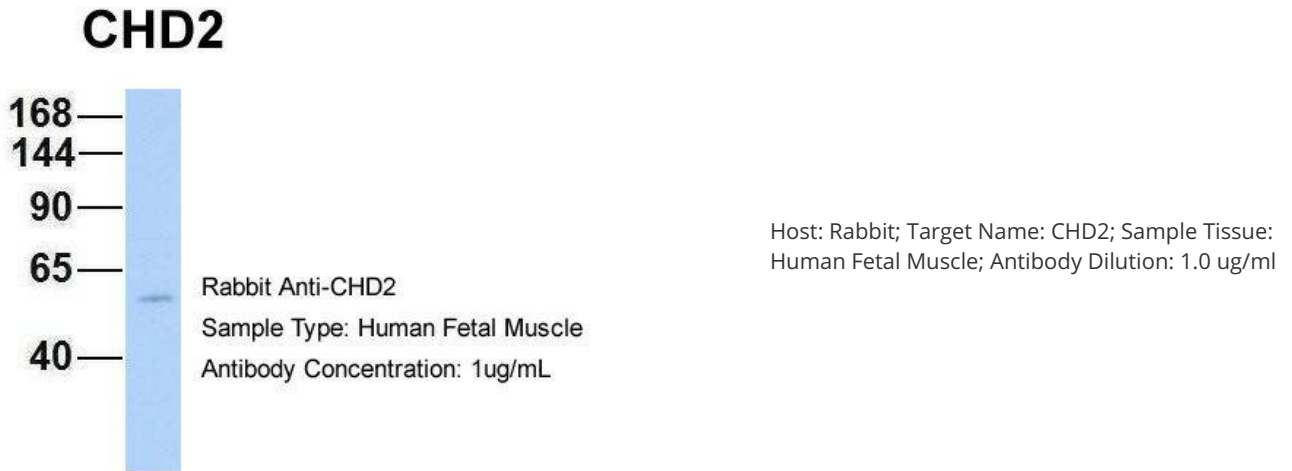
**Background:** The CHD family of proteins is characterized by the presence of chromo (chromatin organization modifier) domains and SNF2-related helicase/ATPase domains. CHD genes alter gene expression possibly by modification of chromatin structure thus altering access of the transcriptional apparatus to its chromosomal DNA template. The CHD family of proteins is characterized by the presence of chromo (chromatin organization modifier) domains and SNF2-related helicase/ATPase domains. CHD genes alter gene expression possibly by modification of chromatin structure thus altering access of the transcriptional apparatus to its chromosomal DNA template. Alternatively spliced transcript variants encoding distinct isoforms have been found for this gene.

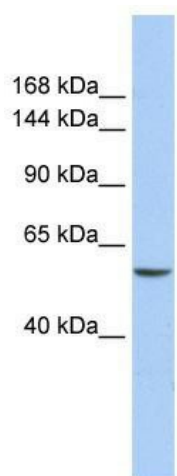
**Synonyms:** EEOC

**Note:** Immunogen Sequence Homology: Dog: 100%; Pig: 100%; Rat: 100%; Horse: 100%; Human: 100%; Bovine: 100%; Guinea pig: 100%; Mouse: 93%; Rabbit: 93%

**Protein Families:** Transcription Factors

**Product images:**





WB Suggested Anti-CHD2 Antibody Titration: 0.2-1 ug/ml; ELISA Titer: 1:62500; Positive Control: 721\_B cell lysate. CHD2 is supported by BioGPS gene expression data to be expressed in 721\_B