

Product datasheet for **TA335952**

RRBP1 Rabbit Polyclonal Antibody

Product data:

Product Type:	Primary Antibodies
Applications:	WB
Recommended Dilution:	WB
Reactivity:	Human
Host:	Rabbit
Isotype:	IgG
Clonality:	Polyclonal
Immunogen:	The immunogen for Anti-RRBP1 Antibody: synthetic peptide directed towards the N terminal of human RRBP1. Synthetic peptide located within the following region: TDVAQSPEAPKQEAPAKKKSGSKKKGPPDADGPLYLPYKTLVSTVGSVMF
Formulation:	Liquid. Purified antibody supplied in 1x PBS buffer with 0.09% (w/v) sodium azide and 2% sucrose. <i>Note that this product is shipped as lyophilized powder to China customers.</i>
Purification:	Affinity Purified
Conjugation:	Unconjugated
Storage:	Store at -20°C as received.
Stability:	Stable for 12 months from date of receipt.
Predicted Protein Size:	109 kDa
Gene Name:	ribosome binding protein 1
Database Link:	NP_001036041 Entrez Gene 6238 Human Q9P2E9



[View online »](#)

Background:

Analysis of cDNA clones indicates that ribosome binding protein 1 may exist in different forms due to removal of tandem repeats, or partial intraexonic splicing of RRBP1. The form presented here is lacking the canine p180 ribosome-binding domain, NQGKKAEGAQ, which is tandemly repeated close to the N-terminus in other forms that haven't been fully characterized. RRBP1 has been excluded as a candidate gene in the cause of Alagille syndrome. Analysis of cDNA clones indicates that ribosome binding protein 1 may exist in different forms due to removal of tandem repeats, or partial intraexonic splicing of RRBP1. The form presented here is lacking the canine p180 ribosome-binding domain, NQGKKAEGAQ, which is tandemly repeated close to the N-terminus in other forms that haven't been fully characterized. RRBP1 has been excluded as a candidate gene in the cause of Alagille syndrome. Alternate splicing results in multiple transcript variants.

Synonyms:

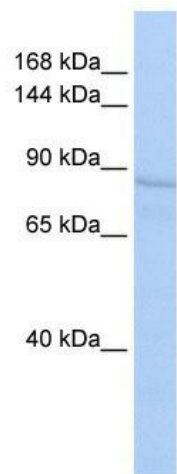
130; ES; ES130; hES; RRp

Note:

Immunogen Sequence Homology: Human: 100%; Horse: 92%; Rat: 82%; Bovine: 82%; Dog: 81%; Rabbit: 81%; Pig: 76%; Guinea pig: 76%; Mouse: 75%

Protein Families:

Druggable Genome, Transmembrane

Product images:

WB Suggested Anti-RRBP1 Antibody Titration: 0.2-1 ug/ml; ELISA Titer: 1: 1562500; Positive Control: HepG2 cell lysate; RRBP1 is strongly supported by BioGPS gene expression data to be expressed in Human HepG2 cells