

Product datasheet for **TA335950**

TMEM91 Rabbit Polyclonal Antibody

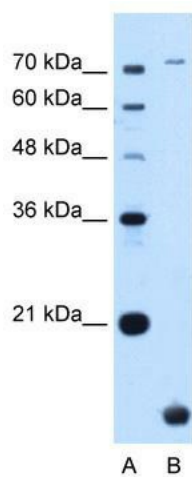
Product data:

Product Type:	Primary Antibodies
Applications:	WB
Recommended Dilution:	WB
Reactivity:	Human
Host:	Rabbit
Isotype:	IgG
Clonality:	Polyclonal
Immunogen:	The immunogen for Anti-TMEM91 Antibody: synthetic peptide directed towards the N terminal of human TMEM91. Synthetic peptide located within the following region: MDSPSLRELQQPLLEGTECETPAQKPGRHELGSPLREIAFAESLRGLQFL
Formulation:	Liquid. Purified antibody supplied in 1x PBS buffer with 0.09% (w/v) sodium azide and 2% sucrose. <i>Note that this product is shipped as lyophilized powder to China customers.</i>
Purification:	Affinity Purified
Conjugation:	Unconjugated
Storage:	Store at -20°C as received.
Stability:	Stable for 12 months from date of receipt.
Predicted Protein Size:	15 kDa
Gene Name:	transmembrane protein 91
Database Link:	NP_001036060 Entrez Gene 641649 Human Q6ZNR0
Background:	The function remains unknown.
Synonyms:	DSPC3; IFITMD6
Note:	Immunogen Sequence Homology: Pig: 100%; Rat: 100%; Human: 100%; Bovine: 100%; Dog: 92%
Protein Families:	Transmembrane



[View online »](#)

Product images:



WB Suggested Anti-TMEM91 Antibody Titration:
0.2-1 ug/ml; Positive Control: HepG2 cell lysate