

Product datasheet for **TA335949**

C19orf28 (MFSD12) Rabbit Polyclonal Antibody

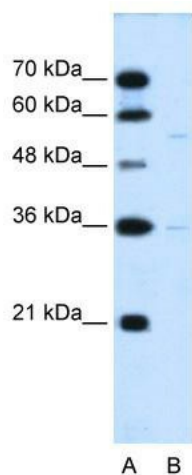
Product data:

Product Type:	Primary Antibodies
Applications:	IHC, WB
Recommended Dilution:	WB, IHC
Reactivity:	Human
Host:	Rabbit
Isotype:	IgG
Clonality:	Polyclonal
Immunogen:	The immunogen for Anti-C19orf28 Antibody: synthetic peptide directed towards the middle region of human C19orf28. Synthetic peptide located within the following region: VELTALRYAFTVVANITVYGAAWLLLHLQGSSRVEPTQDISISDQLGGQD
Formulation:	Liquid. Purified antibody supplied in 1x PBS buffer with 0.09% (w/v) sodium azide and 2% sucrose. <i>Note that this product is shipped as lyophilized powder to China customers.</i>
Purification:	Affinity Purified
Conjugation:	Unconjugated
Storage:	Store at -20°C as received.
Stability:	Stable for 12 months from date of receipt.
Predicted Protein Size:	51 kDa
Gene Name:	major facilitator superfamily domain containing 12
Database Link:	NP_001036145 Entrez Gene 126321 Human Q6NUT3
Background:	The function remains known.
Synonyms:	C19orf28; PP3501
Note:	Immunogen Sequence Homology: Human: 100%
Protein Families:	Transmembrane

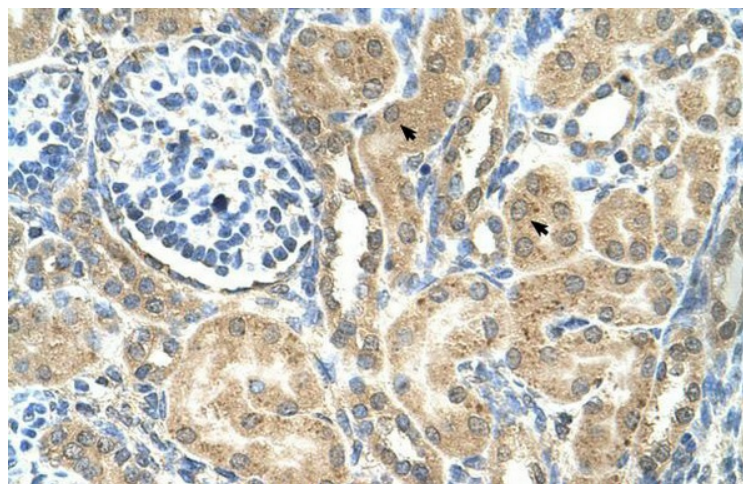


[View online »](#)

Product images:



WB Suggested Anti-C19orf28 Antibody Titration:
0.2-1 ug/ml; Positive Control: HepG2 cell lysate



Human kidney