

## Product datasheet for **TA335948**

### SMAP1 Rabbit Polyclonal Antibody

#### Product data:

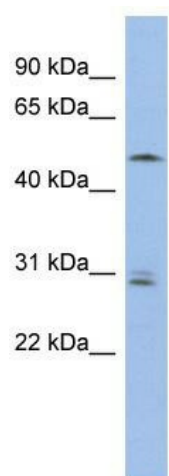
Product Type:	Primary Antibodies
Applications:	WB
Recommended Dilution:	WB
Reactivity:	Human
Host:	Rabbit
Isotype:	IgG
Clonality:	Polyclonal
Immunogen:	The immunogen for Anti-SMAP1 Antibody: synthetic peptide directed towards the middle region of human SMAP1. Synthetic peptide located within the following region: KEPEKPAKPLTAEKLQKKDQQLPKKSTSPKKAAPTVDLLGLDGPVAVP
Formulation:	Liquid. Purified antibody supplied in 1x PBS buffer with 0.09% (w/v) sodium azide and 2% sucrose. <i>Note that this product is shipped as lyophilized powder to China customers.</i>
Purification:	Affinity Purified
Conjugation:	Unconjugated
Storage:	Store at -20°C as received.
Stability:	Stable for 12 months from date of receipt.
Predicted Protein Size:	50 kDa
Gene Name:	small ArfGAP 1
Database Link:	<a href="#">NP_001037770</a> <a href="#">Entrez Gene 60682 Human</a> <a href="#">Q8IYB5</a>
Background:	The protein encoded by this gene is similar to the mouse stromal membrane-associated protein-1. This similarity suggests that this human gene product is also a type II membrane glycoprotein involved in the erythropoietic stimulatory activity of stromal ce
Synonyms:	SMAP-1
Note:	Immunogen Sequence Homology: Human: 100%; Dog: 93%; Pig: 93%; Rat: 93%; Horse: 93%; Bovine: 93%; Rabbit: 93%; Guinea pig: 87%; Mouse: 86%



[View online »](#)

Protein Pathways: Endocytosis

### Product images:



WB Suggested Anti-SMAP1 Antibody Titration:  
0.2-1 ug/ml; ELISA Titer: 1:312500; Positive  
Control: OVCAR-3 cell lysate. SMAP1 is supported  
by BioGPS gene expression data to be expressed  
in OVCAR3