

Product datasheet for **TA335947**

ALS2CR4 (TMEM237) Rabbit Polyclonal Antibody

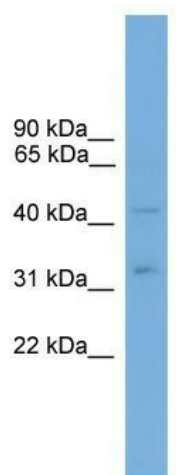
Product data:

| | |
|-------------------------|--|
| Product Type: | Primary Antibodies |
| Applications: | WB |
| Recommended Dilution: | WB |
| Reactivity: | Human |
| Host: | Rabbit |
| Isotype: | IgG |
| Clonality: | Polyclonal |
| Immunogen: | The immunogen for Anti-ALS2CR4 Antibody: synthetic peptide directed towards the middle region of human ALS2CR4. Synthetic peptide located within the following region: AGDQLSNLSNLLQYKTLAYPFQSLLYLLLALSTISAFDRIDFAKISVAI |
| Formulation: | Liquid. Purified antibody supplied in 1x PBS buffer with 0.09% (w/v) sodium azide and 2% sucrose. <i>Note that this product is shipped as lyophilized powder to China customers.</i> |
| Purification: | Affinity Purified |
| Conjugation: | Unconjugated |
| Storage: | Store at -20°C as received. |
| Stability: | Stable for 12 months from date of receipt. |
| Predicted Protein Size: | 45 kDa |
| Gene Name: | transmembrane protein 237 |
| Database Link: | NP_001037850 Entrez Gene 65062 Human Q96Q45 |
| Background: | The function of this protein remains unknown. |
| Synonyms: | ALS2CR4; JBTS14 |
| Note: | Immunogen Sequence Homology: Human: 100%; Horse: 93%; Rabbit: 93%; Mouse: 92%; Pig: 86%; Rat: 86%; Bovine: 86%; Dog: 85% |
| Protein Families: | Transmembrane |



[View online »](#)

Product images:



WB Suggested Anti-ALS2CR4 Antibody Titration:
0.2-1 ug/ml; Positive Control: HT1080 cell lysate