

## Product datasheet for **TA335946**

### CLCC1 Rabbit Polyclonal Antibody

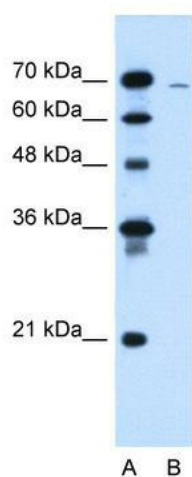
#### Product data:

Product Type:	Primary Antibodies
Applications:	IHC, WB
Recommended Dilution:	WB, IHC
Reactivity:	Human
Host:	Rabbit
Isotype:	IgG
Clonality:	Polyclonal
Immunogen:	The immunogen for Anti-CLCC1 Antibody: synthetic peptide directed towards the N terminal of human CLCC1. Synthetic peptide located within the following region: MHYDAEIIILKRETLLEIQKFLNGEDWKPGALDDALSDILINFKFHDFETW
Formulation:	Liquid. Purified antibody supplied in 1x PBS buffer with 0.09% (w/v) sodium azide and 2% sucrose. <i>Note that this product is shipped as lyophilized powder to China customers.</i>
Purification:	Protein A purified
Conjugation:	Unconjugated
Storage:	Store at -20°C as received.
Stability:	Stable for 12 months from date of receipt.
Predicted Protein Size:	61 kDa
Gene Name:	chloride channel CLIC like 1
Database Link:	<a href="#">NP_001041675</a> <a href="#">Entrez Gene 23155 Human Q96S66</a>
Background:	CLCC1 seems to act as a chloride ion channel.
Synonyms:	MCLC
Note:	Immunogen Sequence Homology: Dog: 100%; Pig: 100%; Rat: 100%; Human: 100%; Mouse: 100%; Bovine: 100%; Rabbit: 100%; Horse: 93%; Guinea pig: 93%
Protein Families:	Ion Channels: Other, Transmembrane

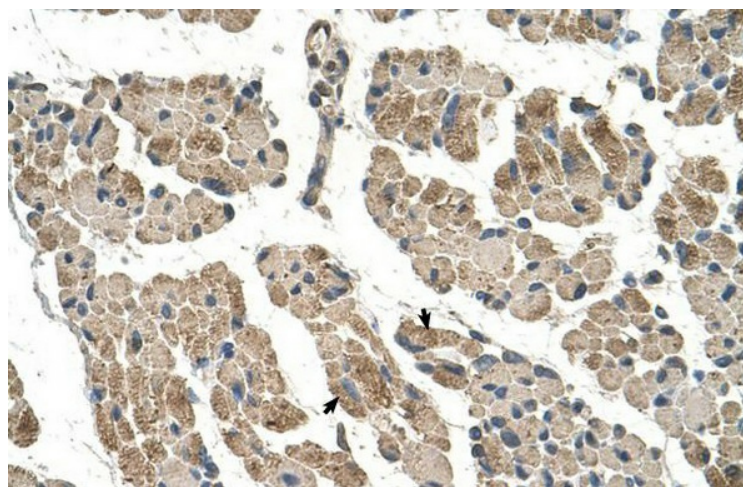


[View online »](#)

## Product images:



WB Suggested Anti-CLCC1 Antibody Titration:  
1.25 ug/ml; Positive Control: HepG2 cell lysate



Human Muscle